



Maturity Profile Reports

March 2013

Prepared by:

- Ken Keller -- Systems Administrator, CMMI Institute
- Brian Mack – SCAMPI Operations, CMMI Institute

Overview: Process Maturity Profile Reports

The Process Maturity Profiles track CMMI adoption trends, including the global distribution of appraisals & number of appraisals. The reports contained in this document were compiled with data on appraisal results reported to the CMMI Institute from the beginning of 2007 thru the end of 2012 and represent values from the latest appraisal from each organization.

Purpose

- Characterize the adoption of CMMI
- Results are from Standard CMMI Appraisal Method for Process Improvement (SCAMPISM) V1.2/V1.3 Class A appraisals using Capability Maturity Model Integration (CMMI V1.2/V1.3)*
 - * SVC and ACQ appraisals are included in this report; PCMM appraisals are not included.

Briefing Contents

This briefing includes two sections:

1. Current status
2. Community trends
 - Changes in the global distribution of appraisals
 - Growth in the number of appraisals performed
 - Shifts in the maturity profile over time

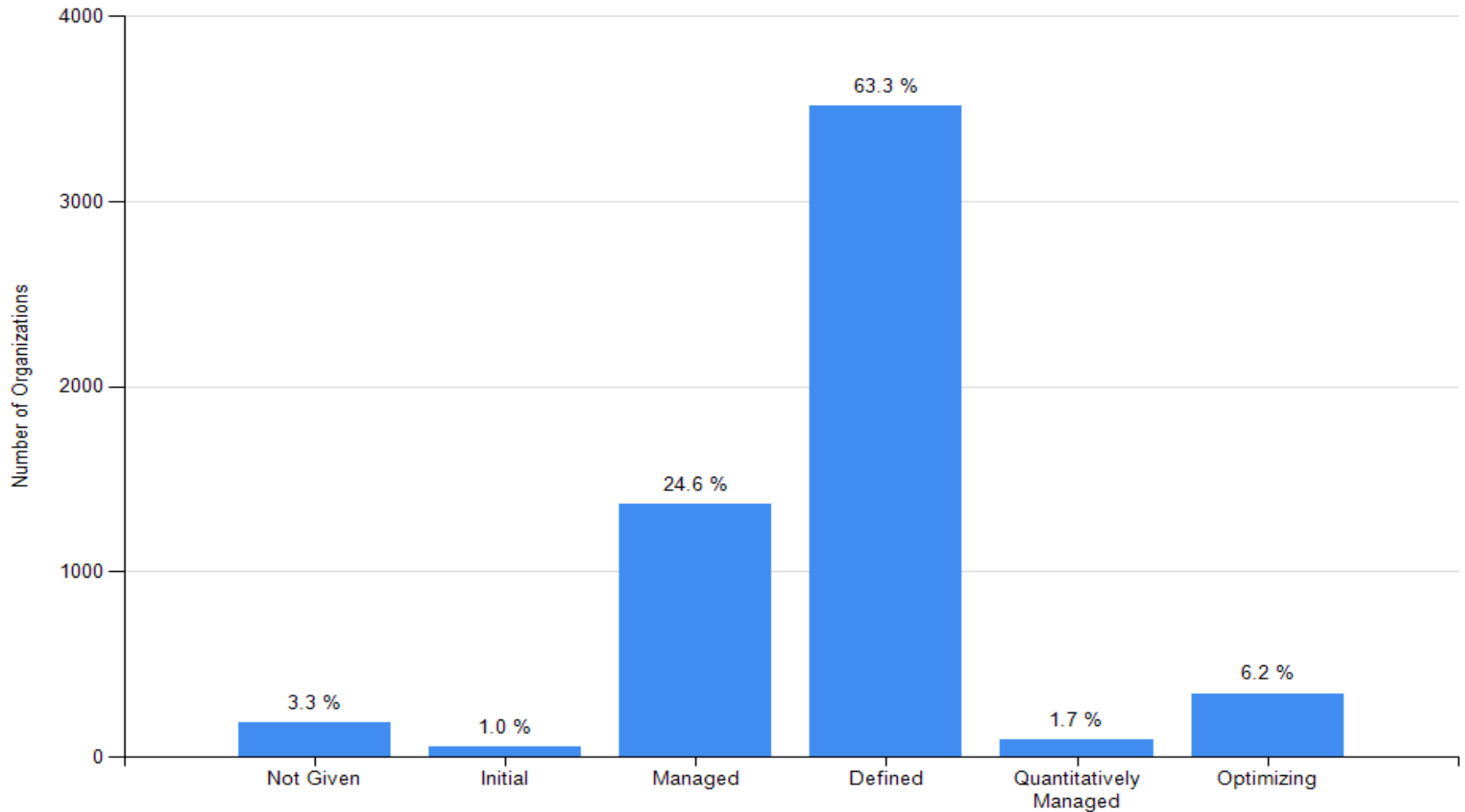
Results at a Glance

- Since 2006 more than 7,200 SCAMPI V1.2/V1.3 appraisals have been reported to SEI/CMMI Institute.
- Appraisals in China and the U.S. represent more than 50% of total appraisals reported.
- 11 new countries have been added to the list of countries where appraisals were performed in 2012.
- 2012 contained the highest number of SCAMPI A appraisals for any year reported so far.

Table of Contents

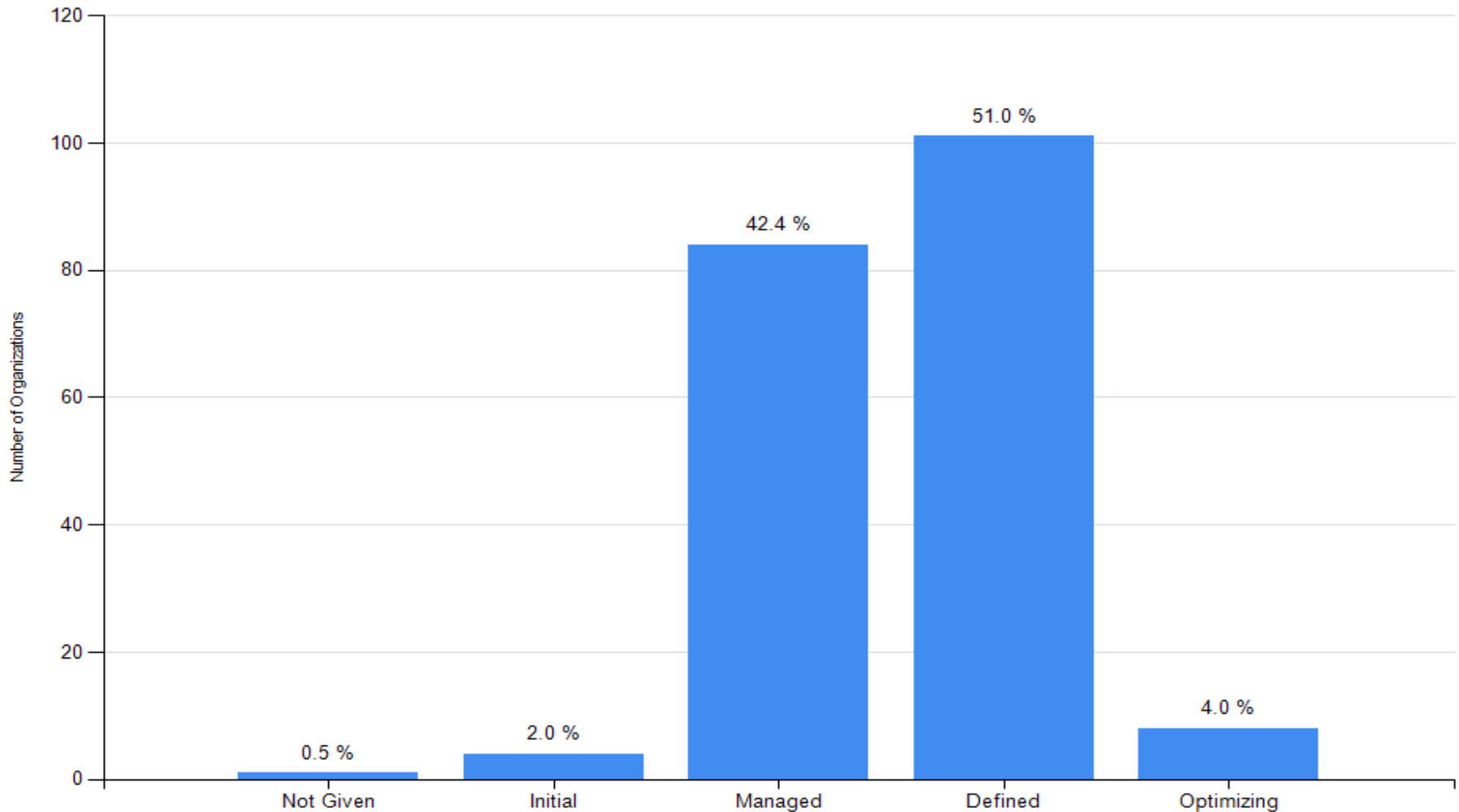
Process Maturity Profile by All Reporting Organizations	5
Process Maturity Profile by All Reporting Organizations (SVC Only)	6
Reporting Organization Categories	7
Process Maturity Profile by Reporting Organization Categories	8
Organization Size	9
Organization Size (SVC Only)	10
Maturity Profile by Organization Size	11
USA and non-USA Reporting Organization Categories	12
Maturity Profile by All Reporting Organizations in the U.S.	13
Maturity Profile by All Reporting Organizations based outside the U.S.	14
Countries Where Appraisals Have Been Performed	16
Number of Appraisals Reported to CMMI by Continent	17
Number of Appraisals Reported to CMMI by Continent (SVC only)	18
Number of Appraisals and Maturity Levels by Country	19
Most Appraisals Reported Per Year by Country	21
Number of Scampi-A Appraisals by Year	22
Trends in Community Maturity Profile	23
Terms Used in This Report.....	24
Contact Information.....	25

Process Maturity Profile by All Reporting Organizations



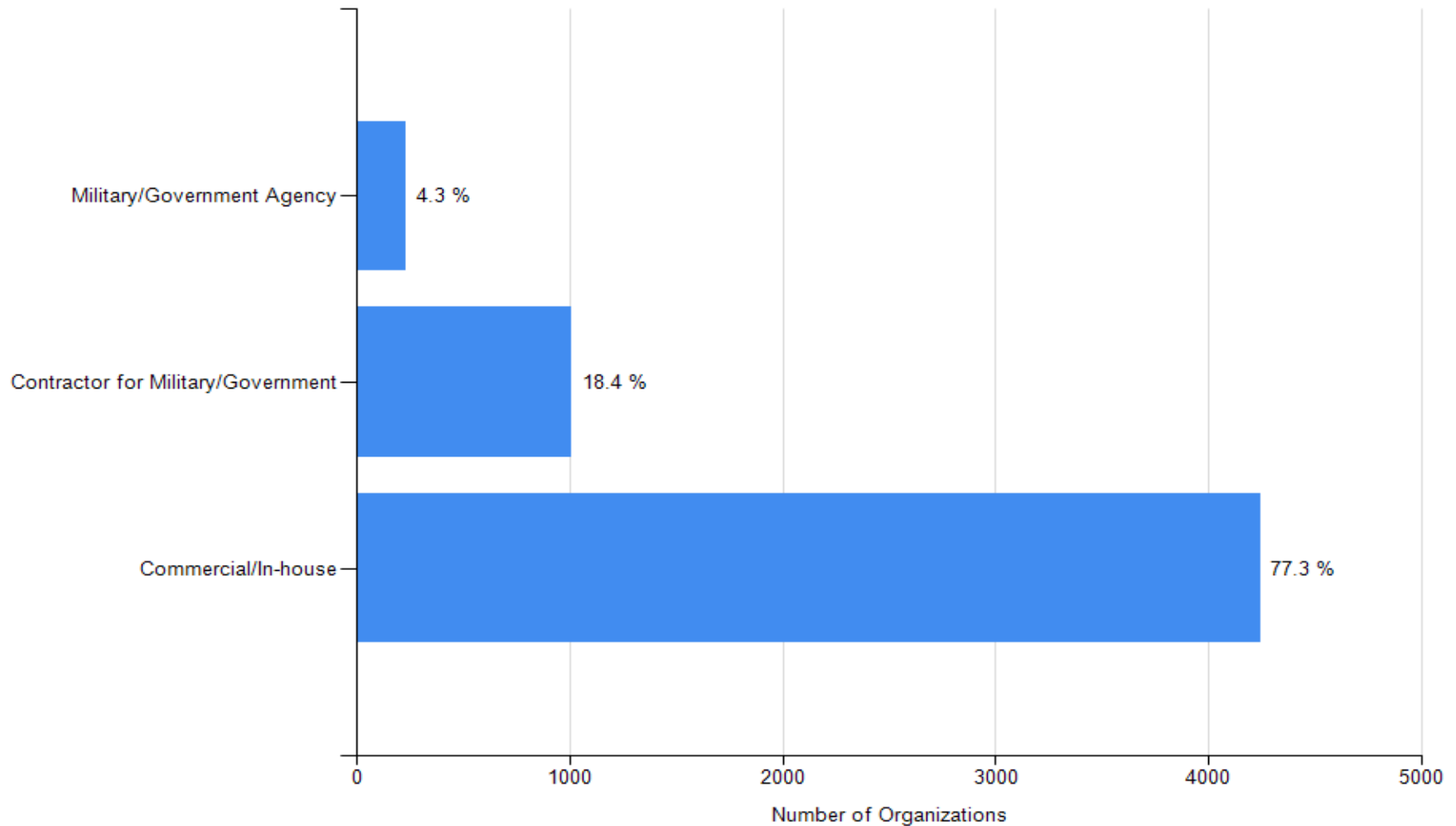
Based on the most recent appraisal of 5,550 organizations

Process Maturity Profile (SVC Only) by All Reporting Organizations



Based on the most recent appraisal of 198 organizations

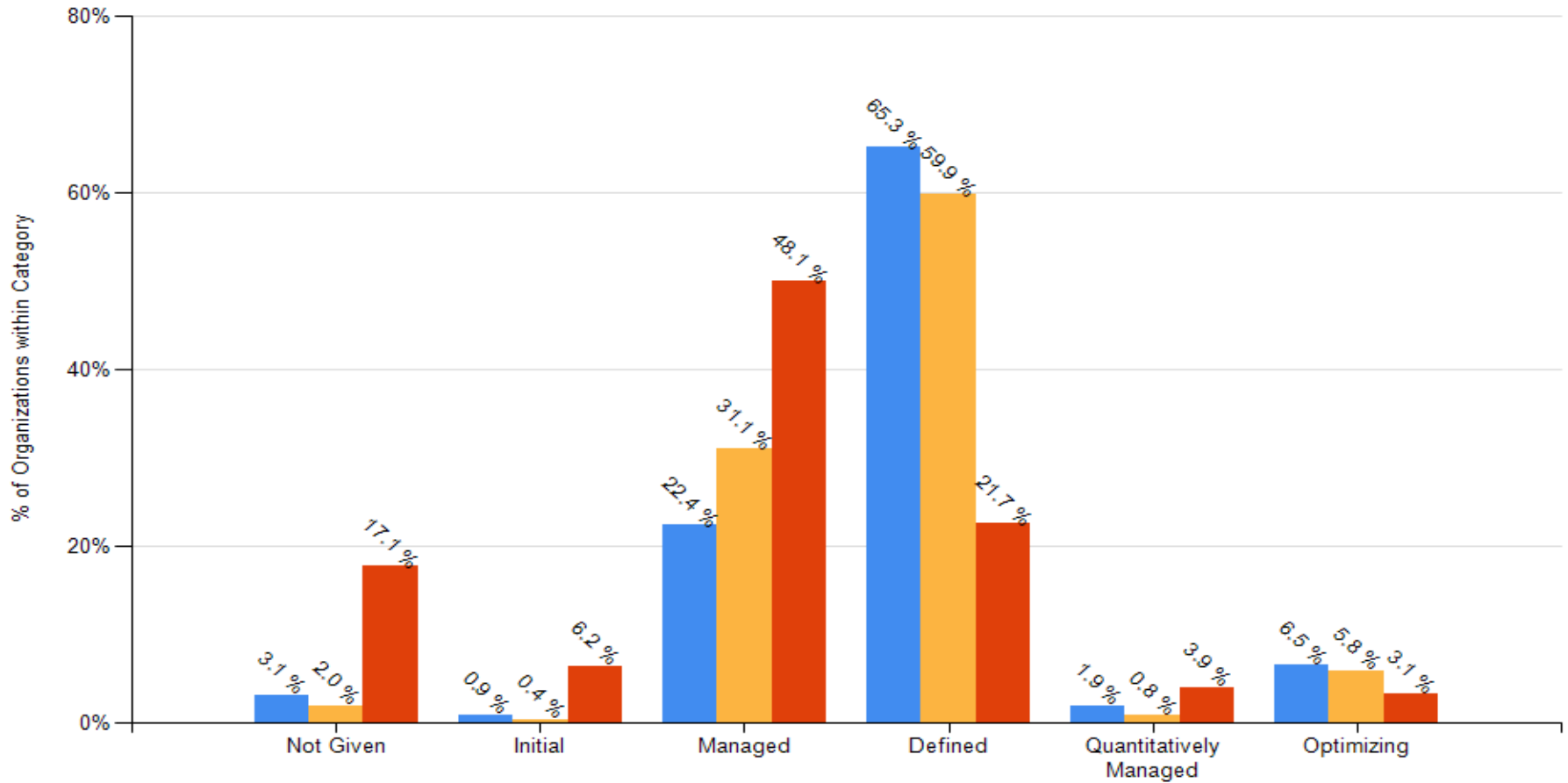
Reporting Organization Categories



Based on the most recent appraisal of 5,488 organizations reporting an organization category

Process Maturity Profile by Reporting Organization Categories

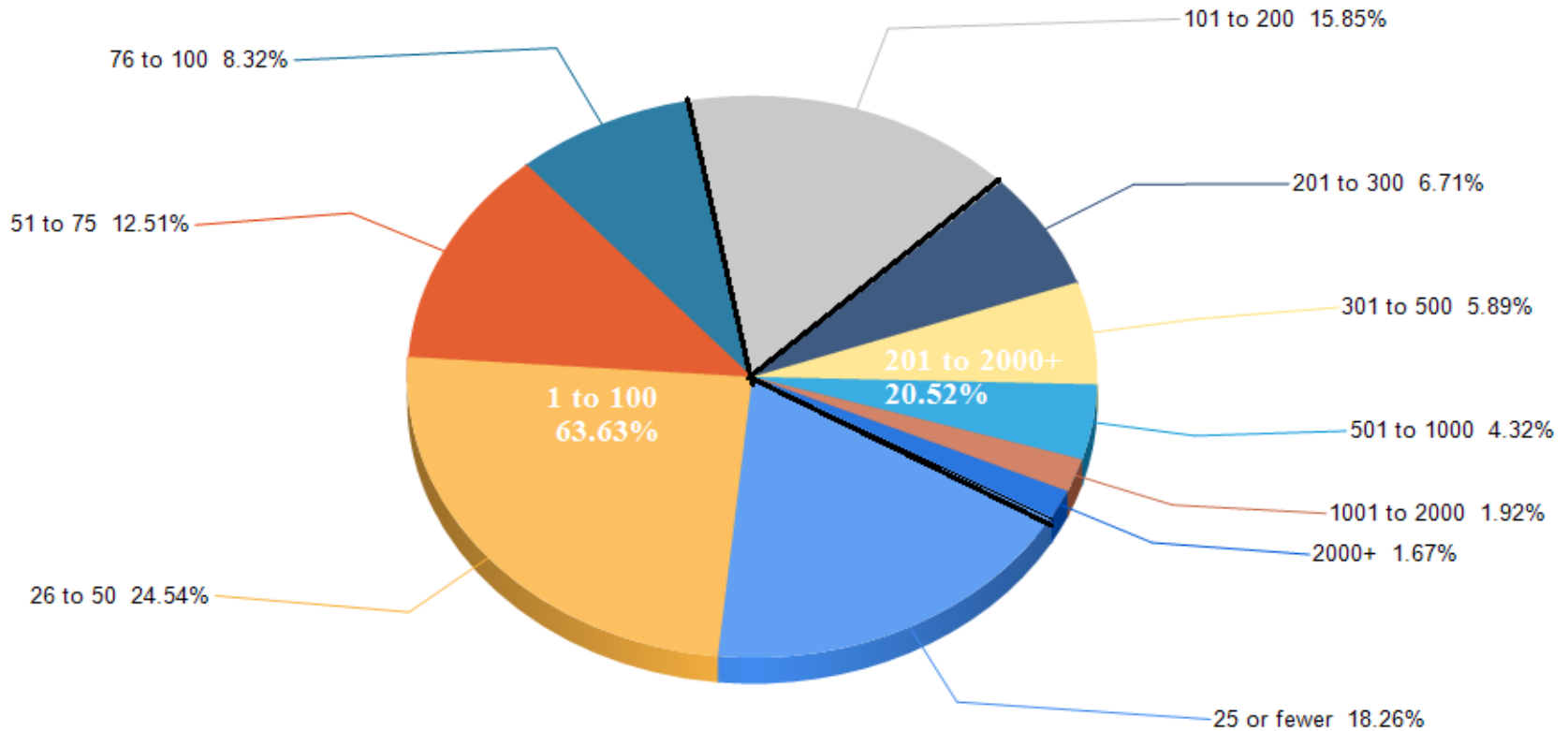
Commercial/In-house 4242 Contractor for Military/Government 1012 Military/Government Agency 234



Based on the most recent appraisal of 5,488 organizations reporting an organization category

Organization Size

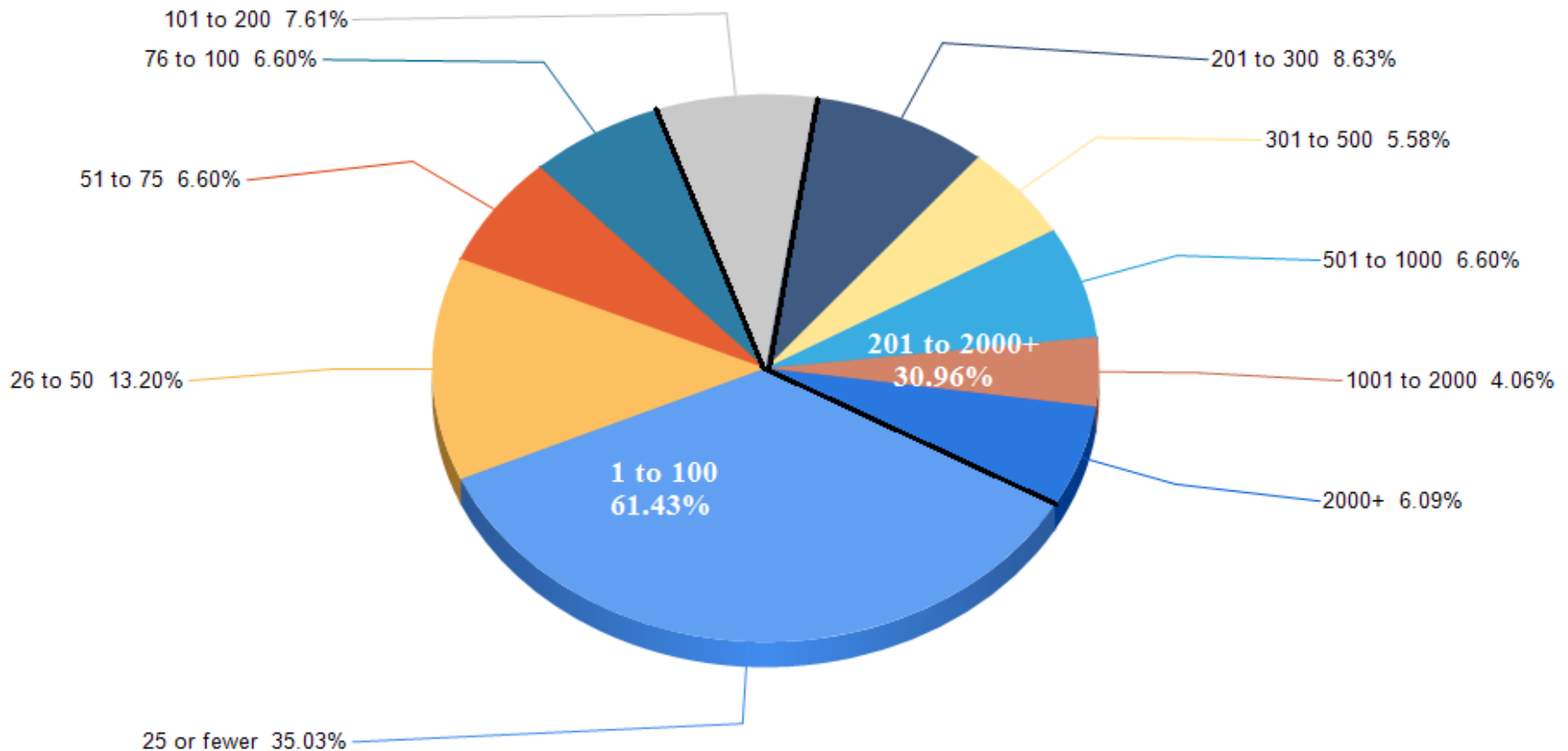
Based on the total number of employees within the area of the organization that was appraised.



Based on 5,536 organizations reporting size data

Organization Size (SVC Only)

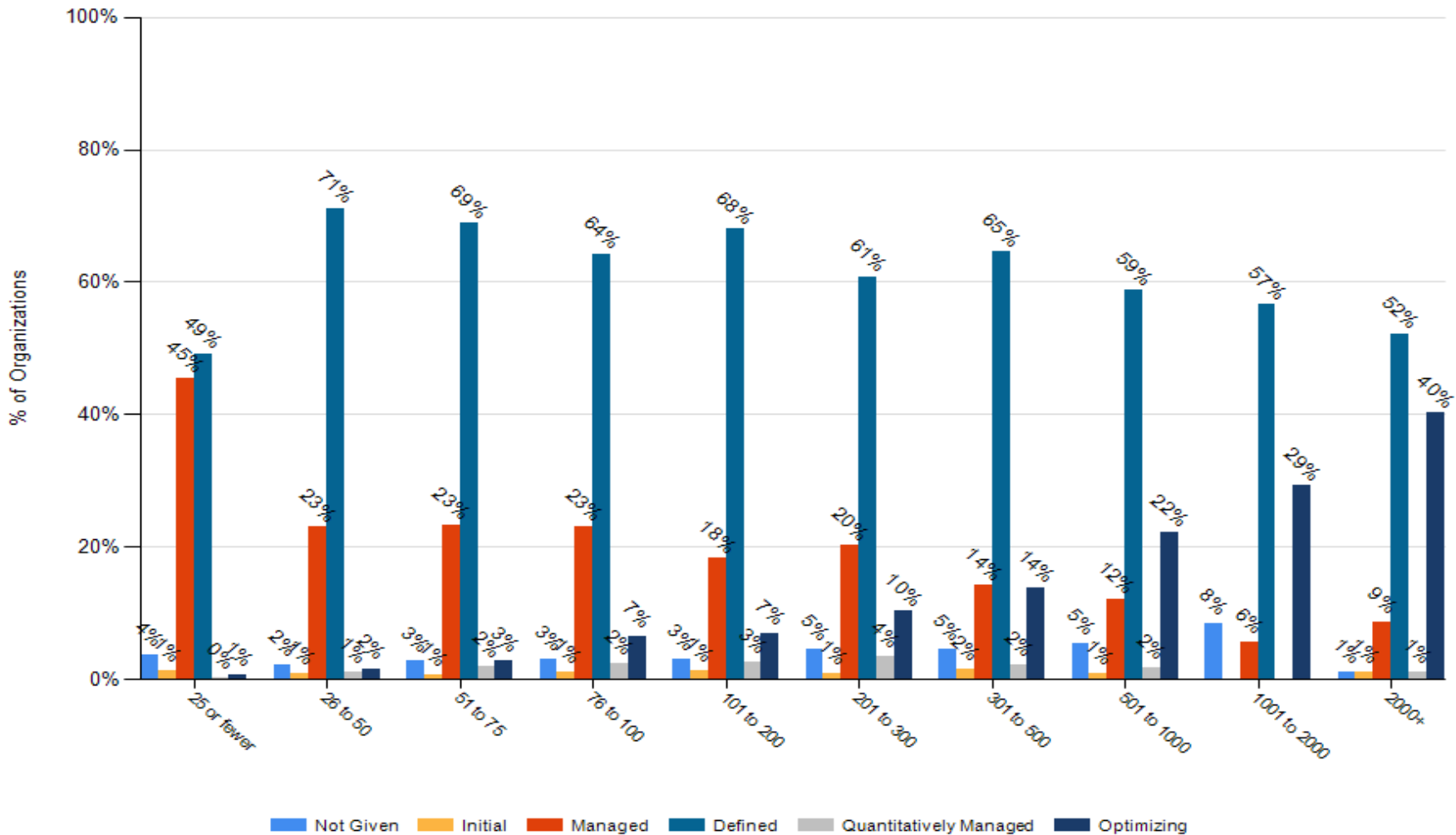
Based on the total number of employees within the area of the organization that was appraised.



Based on 197 organizations reporting size data

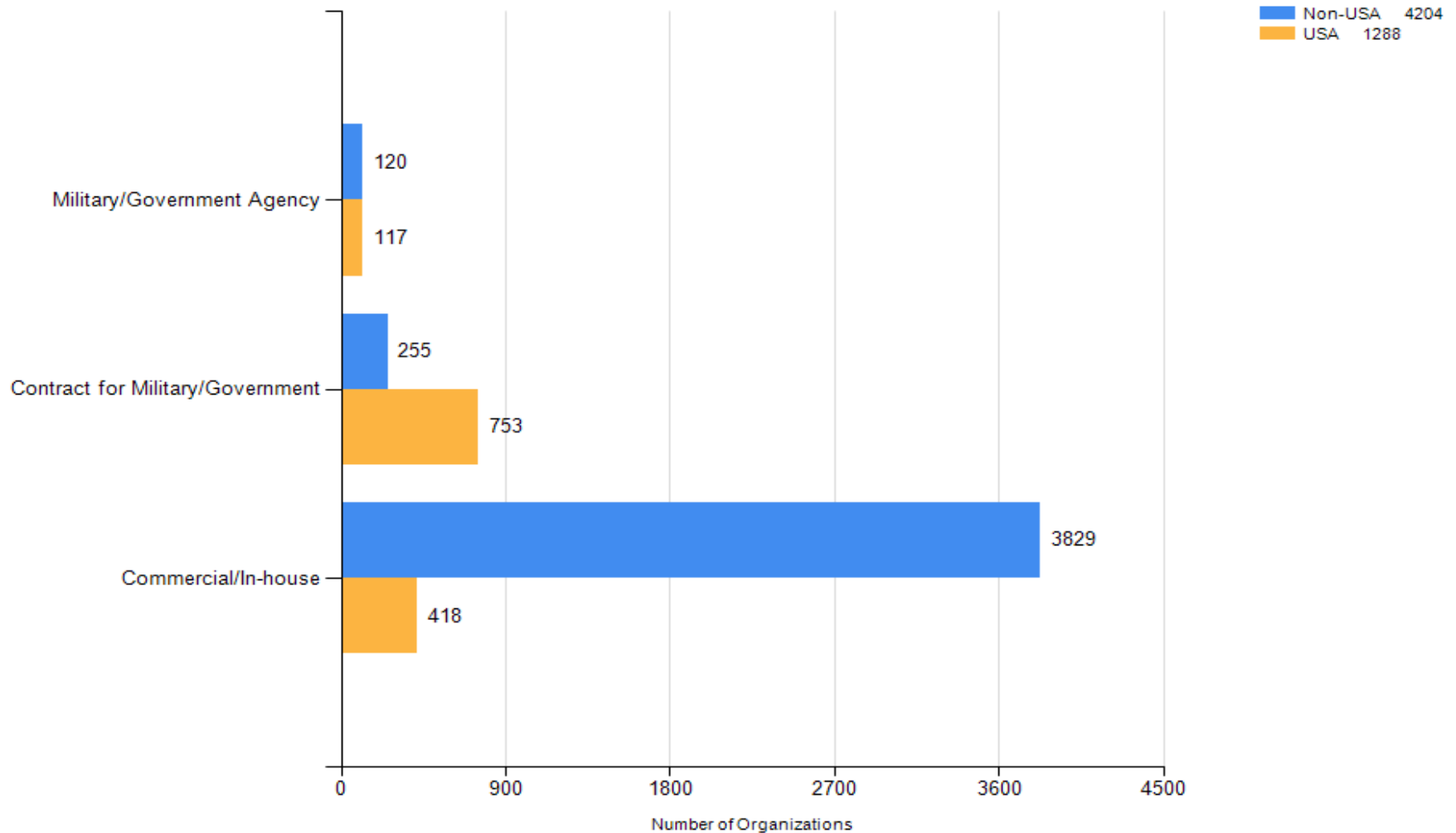
Maturity Profile by Organization Size

Based on the total number of employees within the area of the organization that was appraised.



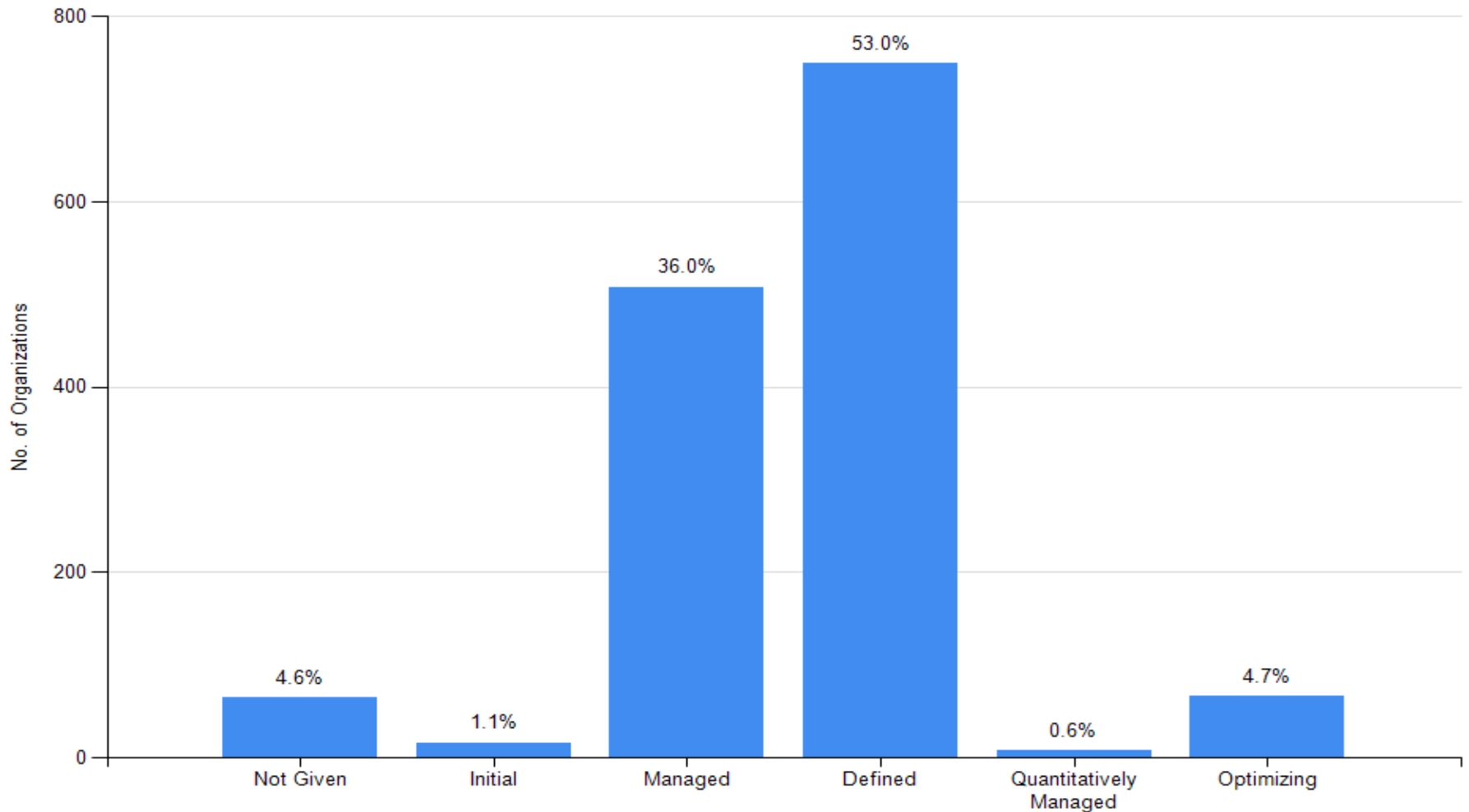
Based on 5,536 organizations reporting size data

U.S. & Non-U.S. Reporting Organization Categories



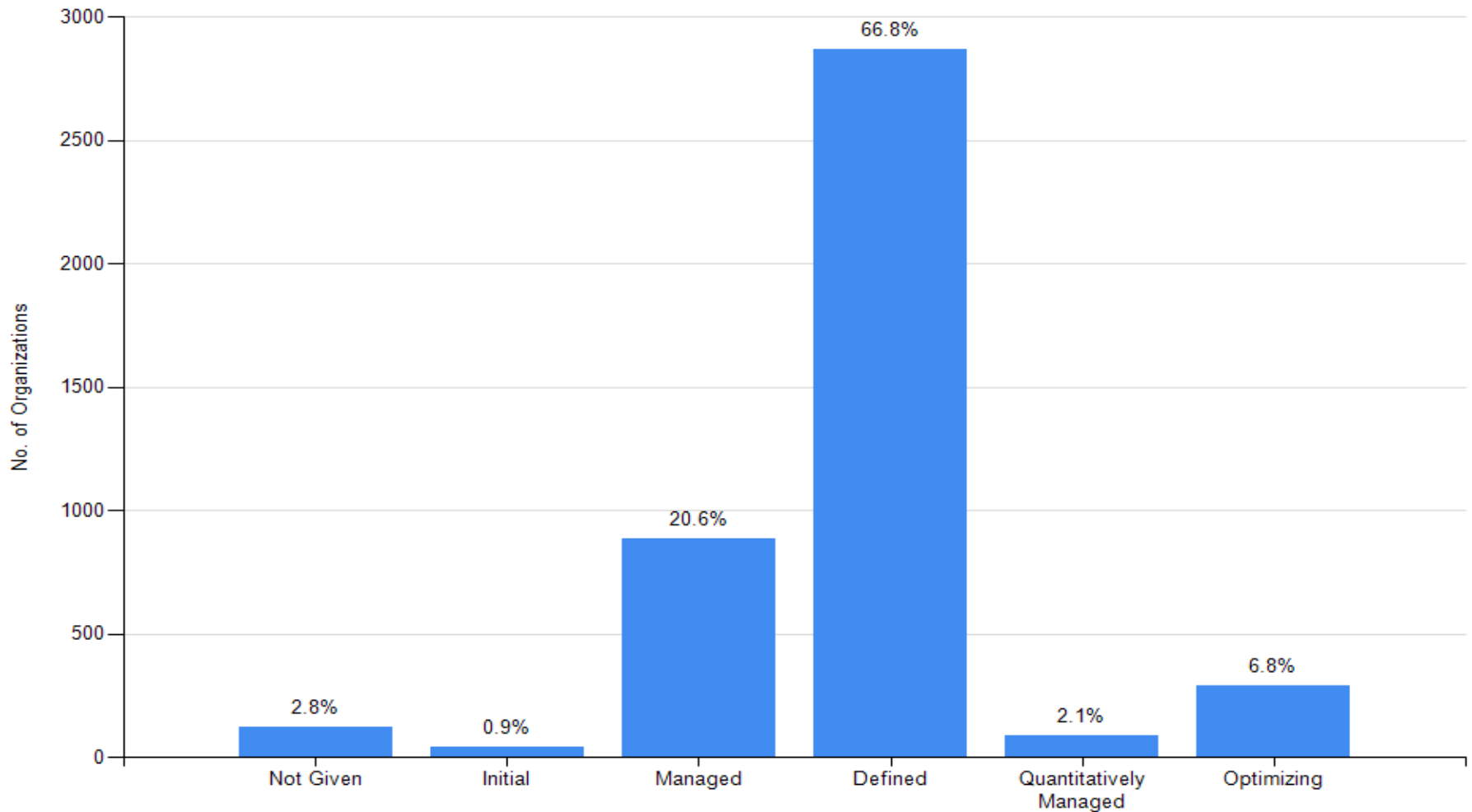
Based on the most recent appraisal of 5,492 organizations reporting an organization category

Maturity Profile by all Reporting Organizations in the U.S.



Based on 1,412 organizations in the U.S.

Maturity Profile by all Reporting Organizations based outside the U.S.



Based on 4,289 organizations outside the U.S.

Section 2 – Community Trends

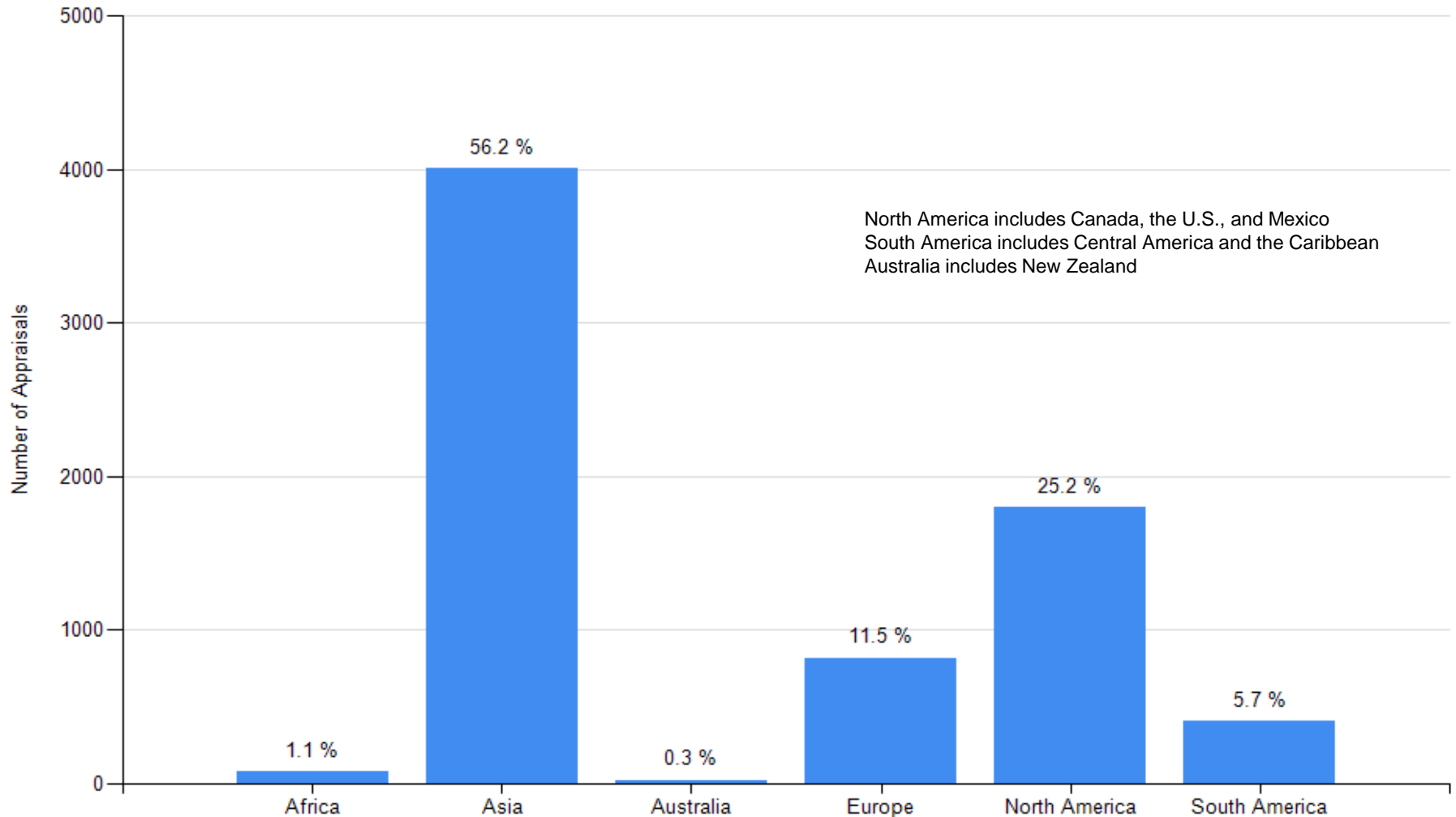
Appraisals are conducted through December 2012 and reported to the CMMI Institute by January 2013.

- 88 countries reporting appraisals
 - Most of the appraisals are from Asia and North America
- 94% of SCAMPI A appraisals from 2007 to 2012 were posted on PARS

Countries Where Appraisals Have Been Performed

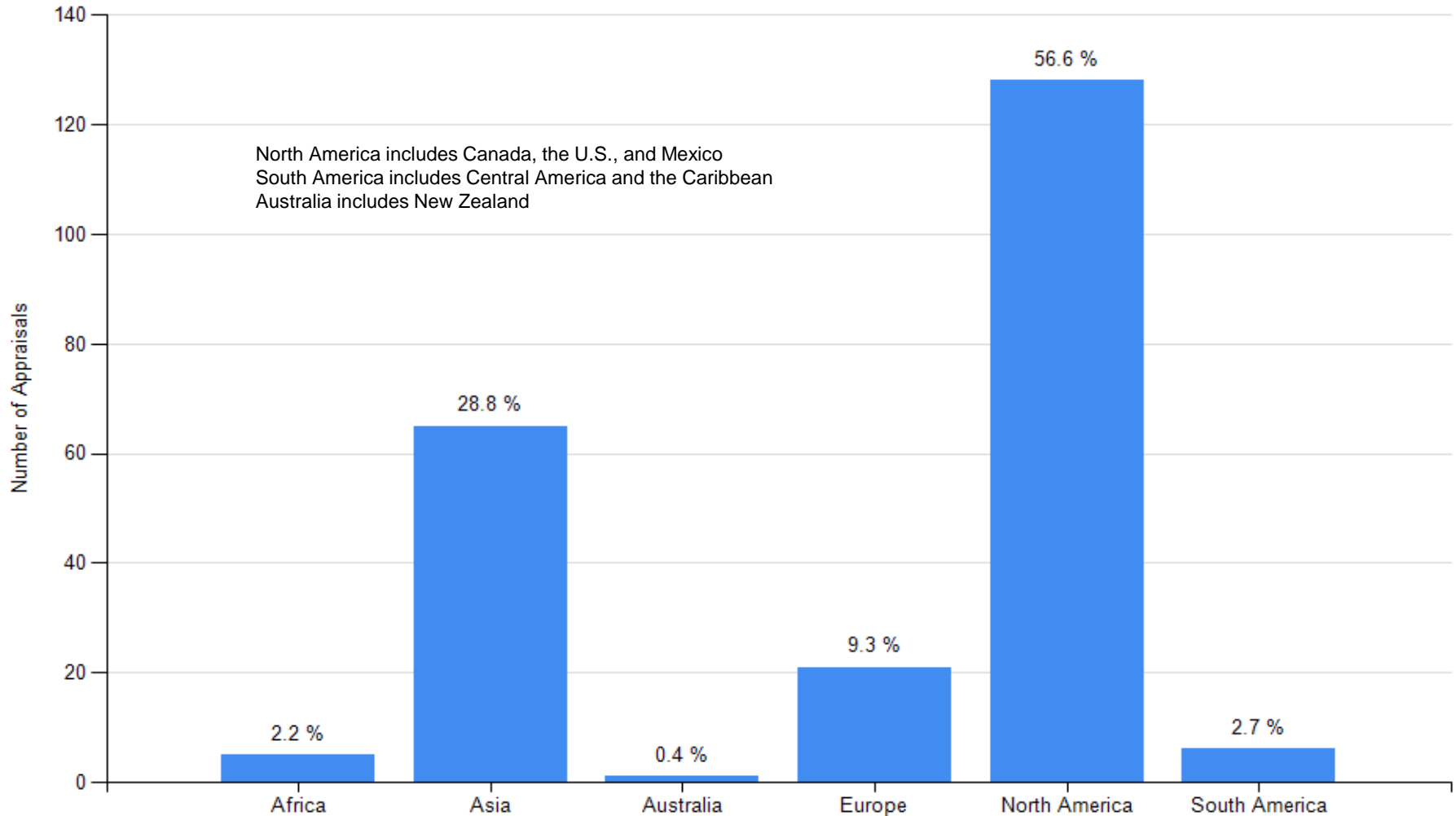
Angola	Argentina	Australia	Austria
Bahrain	Bangladesh	Belarus	Belgium
Brazil	Brunei Darussalam	Bulgaria	Canada
Chile	China	Colombia	Costa Rica
Croatia	Cuba	Cyprus	Czech Republic
Denmark	Dominican Republic	Egypt	El Salvador
Finland	France	Germany	Ghana
Greece	Guatemala	Hong Kong	Hungary
India	Indonesia	Iraq	Ireland
Israel	Italy	Jamaica	Japan
Jordan	Kenya	Korea, Republic of	Kuwait
Latvia	Lebanon	Lithuania	Luxembourg
Macedonia	Malawi	Malaysia	Mauritius
Mexico	Morocco	Nepal	Netherlands
New Zealand	Norway	Pakistan	Panama
Paraguay	Peru	Philippines	Poland
Portugal	Qatar	Romania	Russia
Saudi Arabia	Singapore	Slovakia	South Africa
Spain	Sri Lanka	Sweden	Switzerland
Syrian Arab Republic	Taiwan	Thailand	Tunisia
Turkey	Ukraine	United Arab Emirates	United Kingdom
United States	Uruguay	Venezuela	Viet Nam

Number of Appraisals Reported by Continent



Based on 7,131 appraisals

Number of Appraisals Reported by Continent (SVC Only)



Based on 226 appraisals

Number of Appraisals and Maturity Levels by Country

Country	Appraisals	Maturity Level					Country	Appraisals	Maturity Level				
		1	2	3	4	5			1	2	3	4	5
Angola	10 or fewer						Germany	77	9	32	36	0	0
Argentina	87	0	46	34	0	7	Ghana	10 or fewer					
Australia	14	0	4	8	0	2	Greece	10 or fewer					
Austria	10 or fewer						Guatemala	10 or fewer					
Bahrain	10 or fewer						Hong Kong	16	0	5	7	0	4
Bangladesh	12	0	0	12	0	0	Hungary	10 or fewer					
Belarus	10 or fewer						India	662	1	31	481	5	144
Belgium	14	1	6	7	0	0	Indonesia	10 or fewer					
Brazil	174	1	88	73	1	11	Iraq	10 or fewer					
Brunei Darussalam	10 or fewer						Ireland	10 or fewer					
Bulgaria	10 or fewer						Israel	17	1	0	11	0	5
Canada	45	1	16	22	1	5	Italy	67	0	33	33	0	1
Chile	50	2	24	19	0	5	Jamaica	10 or fewer					
China	2426	1	83	2,208	66	68	Japan	191	8	49	112	9	13
Colombia	48	1	17	20	3	7	Jordan	10 or fewer					
Costa Rica	10 or fewer						Kenya	10 or fewer					
Croatia	10 or fewer						Korea, Republic of	198	0	68	107	14	9
Cuba	10 or fewer						Kuwait	10 or fewer					
Cyprus	10 or fewer						Latvia	10 or fewer					
Czech Republic	10 or fewer						Lebanon	10 or fewer					
Denmark	10 or fewer						Luxembourg	10 or fewer					
Dominican Republic	10 or fewer						Macedonia	10 or fewer					
Egypt	51	1	26	22	0	2	Malawi	10 or fewer					
El Salvador	10 or fewer						Malaysia	62	0	11	48	0	3
Finland	10 or fewer						Mauritius	10 or fewer					
France	140	3	88	48	0	1	Mexico	165	0	82	68	4	11

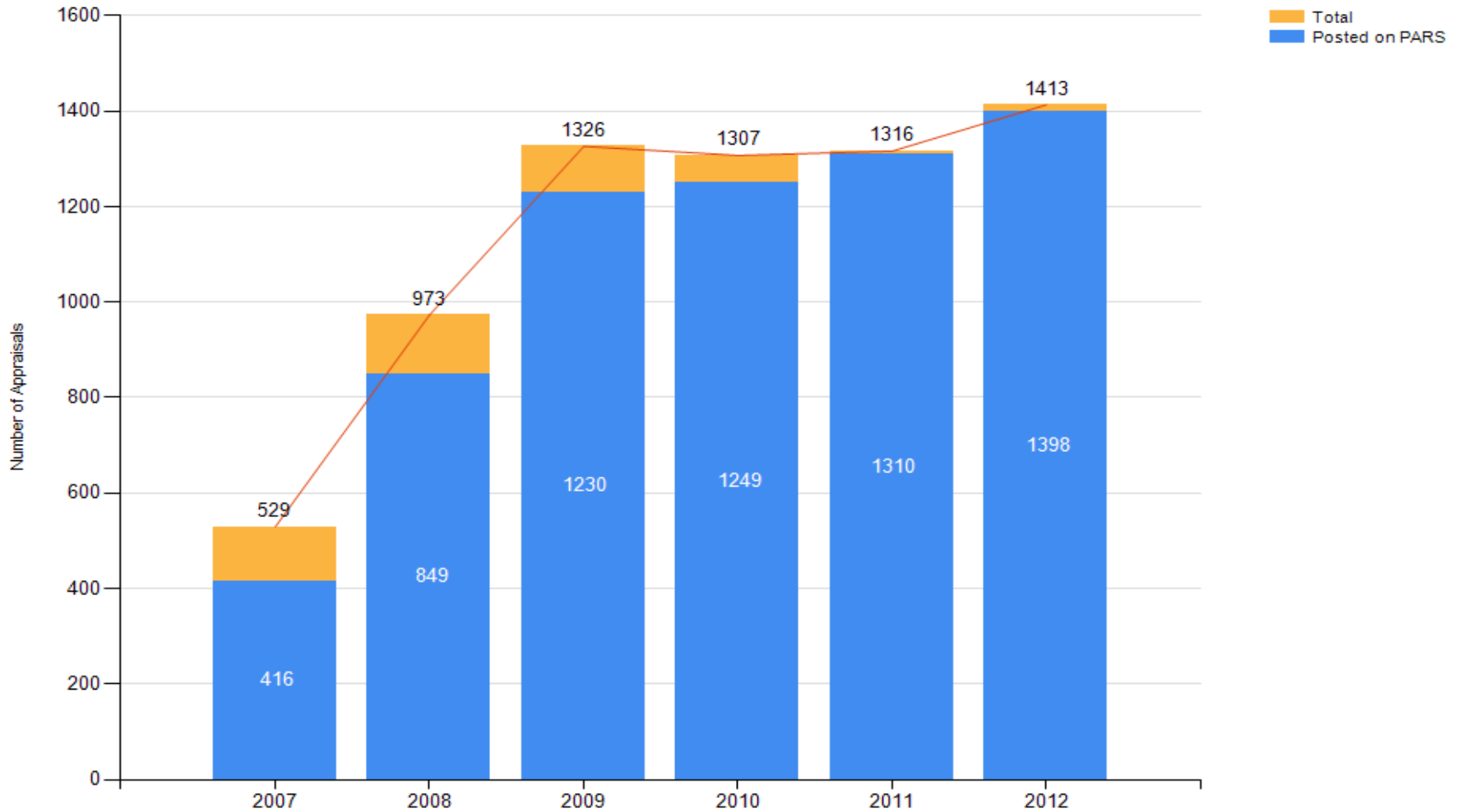
Number of Appraisals and Maturity Levels by Country

Country	Appraisals	Maturity Level					Country	Appraisals	Maturity Level				
		1	2	3	4	5			1	2	3	4	5
Morocco	10 or fewer						South Africa	10 or fewer					
Nepal	10 or fewer						Spain	273	1	158	99	3	12
Netherlands	15	1	4	10	0	0	Sri Lanka	18	0	2	15	0	1
New Zealand	10 or fewer						Sweden	10 or fewer					
Norway	10 or fewer						Switzerland	14	0	10	3	0	1
Pakistan	27	1	21	4	0	1	Syrian Arab Republic	10 or fewer					
Panama	10 or fewer						Taiwan	130	1	53	70	5	1
Paraguay	10 or fewer						Thailand	68	0	18	46	0	4
Peru	24	0	11	11	0	2	Tunisia	10 or fewer					
Philippines	20	0	4	10	1	5	Turkey	30	0	0	27	0	3
Poland	10 or fewer						Ukraine	10 or fewer					
Portugal	27	0	11	13	0	3	United Arab Emirates	15	1	4	8	0	2
Qatar	10 or fewer						United Kingdom	86	3	33	42	1	7
Romania	15	1	4	10	0	0	United States	1521	17	600	825	8	71
Russia	11	0	2	5	0	4	Uruguay	10	0	0	7	0	3
Saudi Arabia	18	0	2	11	2	3	Venezuela	10 or fewer					
Singapore	22	0	5	14	2	1	Viet Nam	37	0	0	32	1	4
Slovakia	10 or fewer												

Most Appraisals Reported Per Year by Country

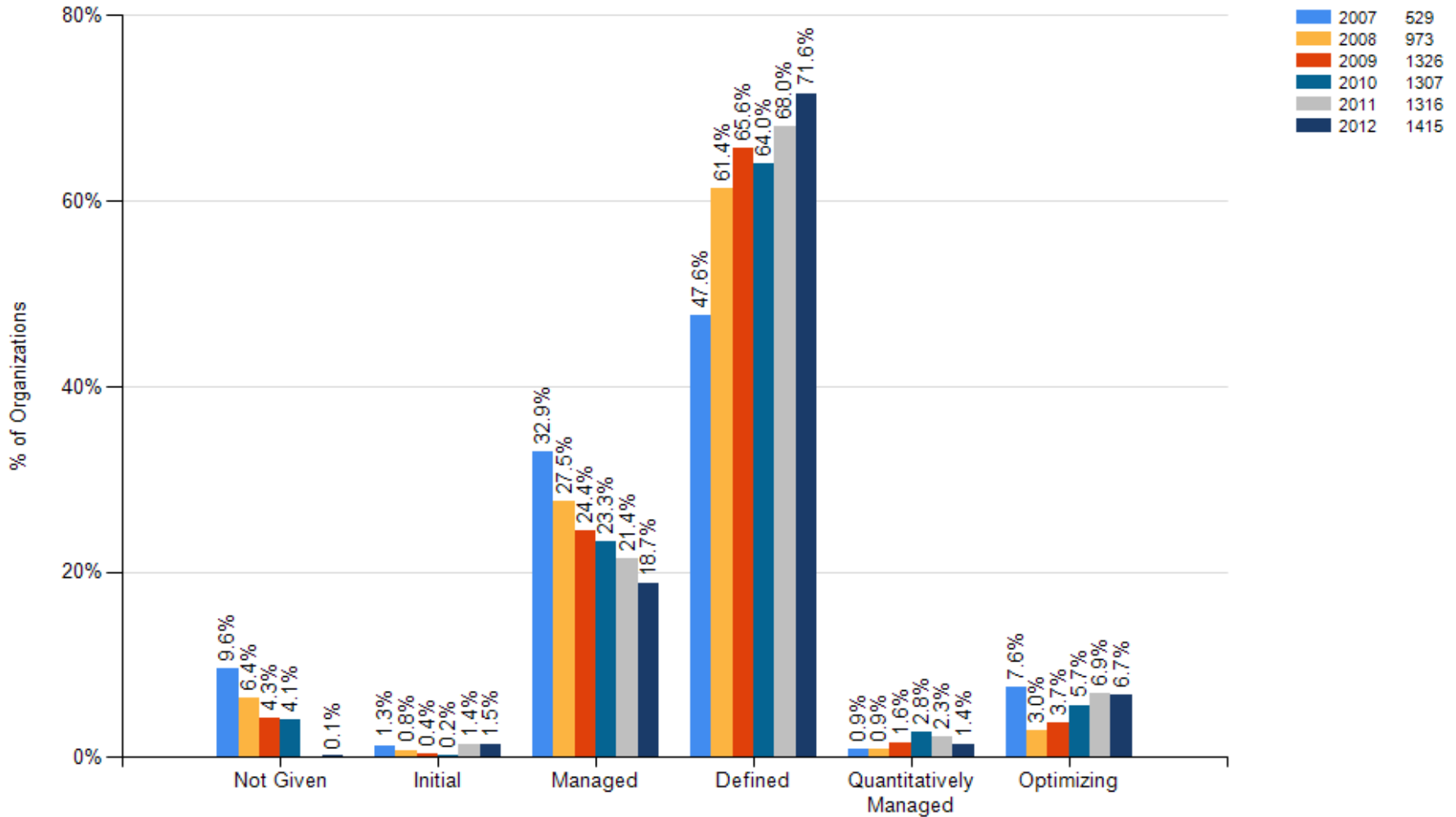
Country	2007	2008	2009	2010	2011	2012	Total
China	104	278	476	499	508	560	2,425
United States	129	206	276	295	296	317	1,519
India	76	83	126	106	135	136	662
Spain	14	30	73	40	62	54	273
Korea, Republic of	19	29	27	34	43	46	198
Japan	12	46	33	33	43	24	191
Brazil	14	27	39	40	29	25	174
Mexico	4	18	31	35	31	46	165
France	12	27	31	27	26	17	140
Taiwan	17	29	19	24	25	16	130

Number of SCAMPI A Appraisals Reported by Year



Based on 6,864 appraisals

Trends in Community Maturity Profile



Based on a cumulative view of the most recent 6,866 appraisals of organizations up through the year indicated.

Terms Used In This Report

Company	Parent of the appraised entity. A company can be commercial or non-commercial firm, for-profit or not for-profit business, a research and development unit, a higher education unit, a government agency, or branch of service, etc.
Organization	Appraised entity. The organization unit to which the appraisal results apply. An appraised entity can be the entire company, a selected business unit, unit supporting a particular product line or service, etc.
PARS	The Publish Appraisal Results (PARS) webpage contains CMMI appraisals published at the request of the appraisal sponsor. The URL is: http://sas.cmmiinstitute.com/PARS/

Contact Information

CMMI Customer Relations	+1 412 282 4020
CMMI Fax Number	+1 412 282 4030
Internet Address	http://www.cmmiinstitute.com
E-mail Address	info@cmmiinstitute.com
Mailing Address	CMMI Institute 11 Stanwix Street, Suite 1150 Pittsburgh, PA 15222 USA

NO WARRANTY

- THIS MATERIAL IS FURNISHED ON AN “AS-IS” BASIS. CMMI INSTITUTE MAKE NO WARRANTIES OF ANY KIND, EITHER EXPRESSED OR IMPLIED, AS TO ANY MATTER INCLUDING, BUT NOT LIMITED TO, WARRANTY OF FITNESS FOR PURPOSE OR MERCHANTABILITY, EXCLUSIVITY, OR RESULTS OBTAINED FROM USE OF THE MATERIAL. CMMI INSTITUTE DOES NOT MAKE ANY WARRANTY OF ANY KIND WITH RESPECT TO FREEDOM FROM PATENT, TRADEMARK, OR COPYRIGHT INFRINGEMENT.