



Maturity Profile Reports

September 2013

Prepared by:

- Ken Keller -- Systems Administrator, CMMI Institute
- Brian Mack – SCAMPI Operations, CMMI Institute

Overview: Process Maturity Profile Reports

The Process Maturity Profiles track CMMI® adoption trends, including the global distribution of appraisals & number of appraisals. The reports contained in this document were compiled with data on appraisal results reported to the CMMI Institute from the beginning of 2007 thru the end of June 2013 and represent values from the latest appraisal from each organization.

Purpose

- Characterize the adoption of CMMI
- Results are from Standard CMMI Appraisal Method for Process Improvement (SCAMPISM) V1.2/V1.3 Class A appraisals using Capability Maturity Model Integration (CMMI V1.2/V1.3)*
 - * SVC and ACQ appraisals are included in this report; PCMM appraisals are not included.

Briefing Contents

This briefing includes two sections:

1. Current status
2. Community trends
 - Changes in the global distribution of appraisals
 - Growth in the number of appraisals performed
 - Shifts in the maturity profile over time

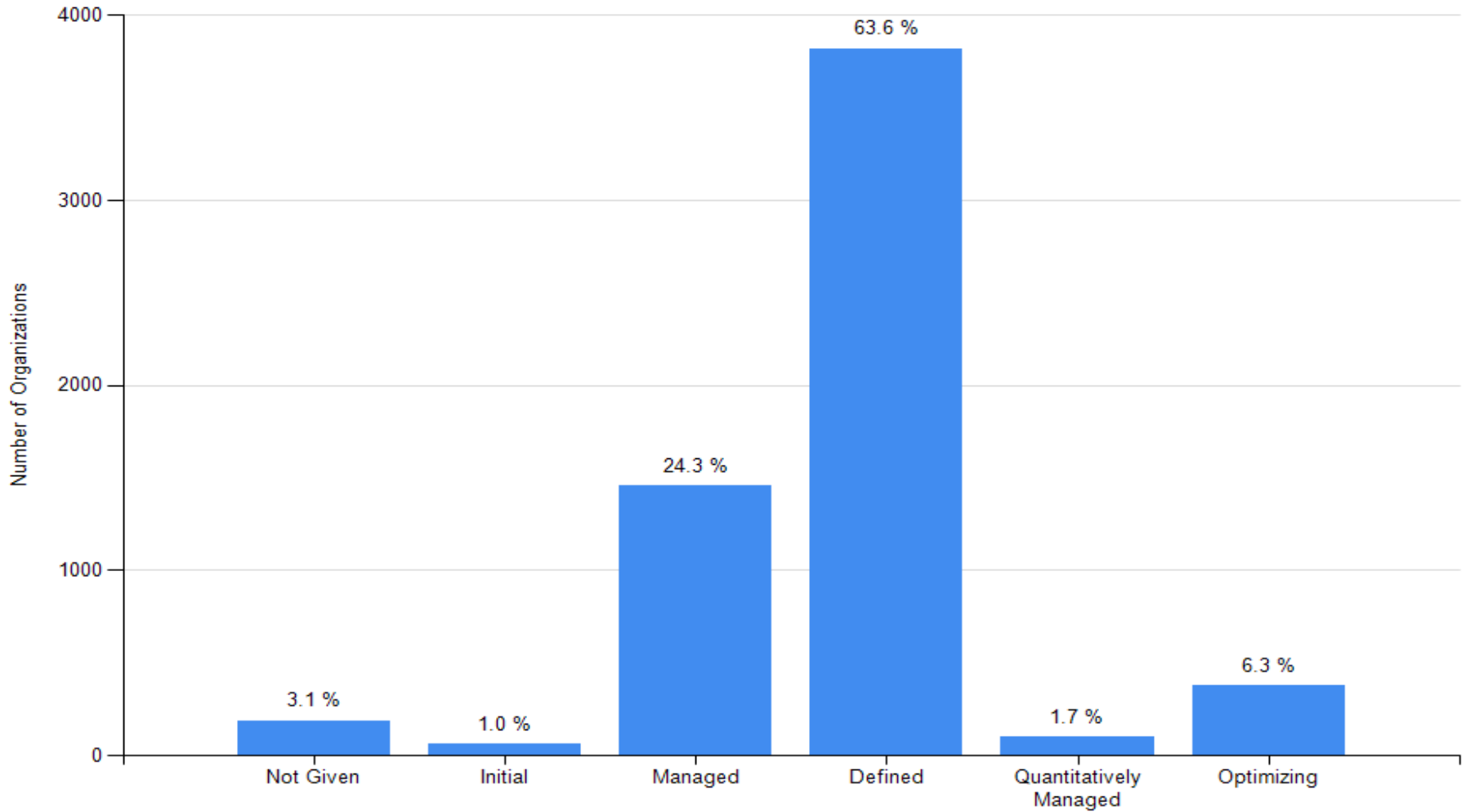
Results at a Glance

- Since 2006, more than 7,800 SCAMPI V1.2/V1.3 appraisals have been reported to the SEI/CMMI Institute.
- Appraisals in China and the U.S. represent more than 50% of total appraisals reported.
- 2012 contained the highest number of SCAMPI A appraisals for any year reported so far. 2013 is on pace to equal or exceed the 2012 totals.

Table of Contents

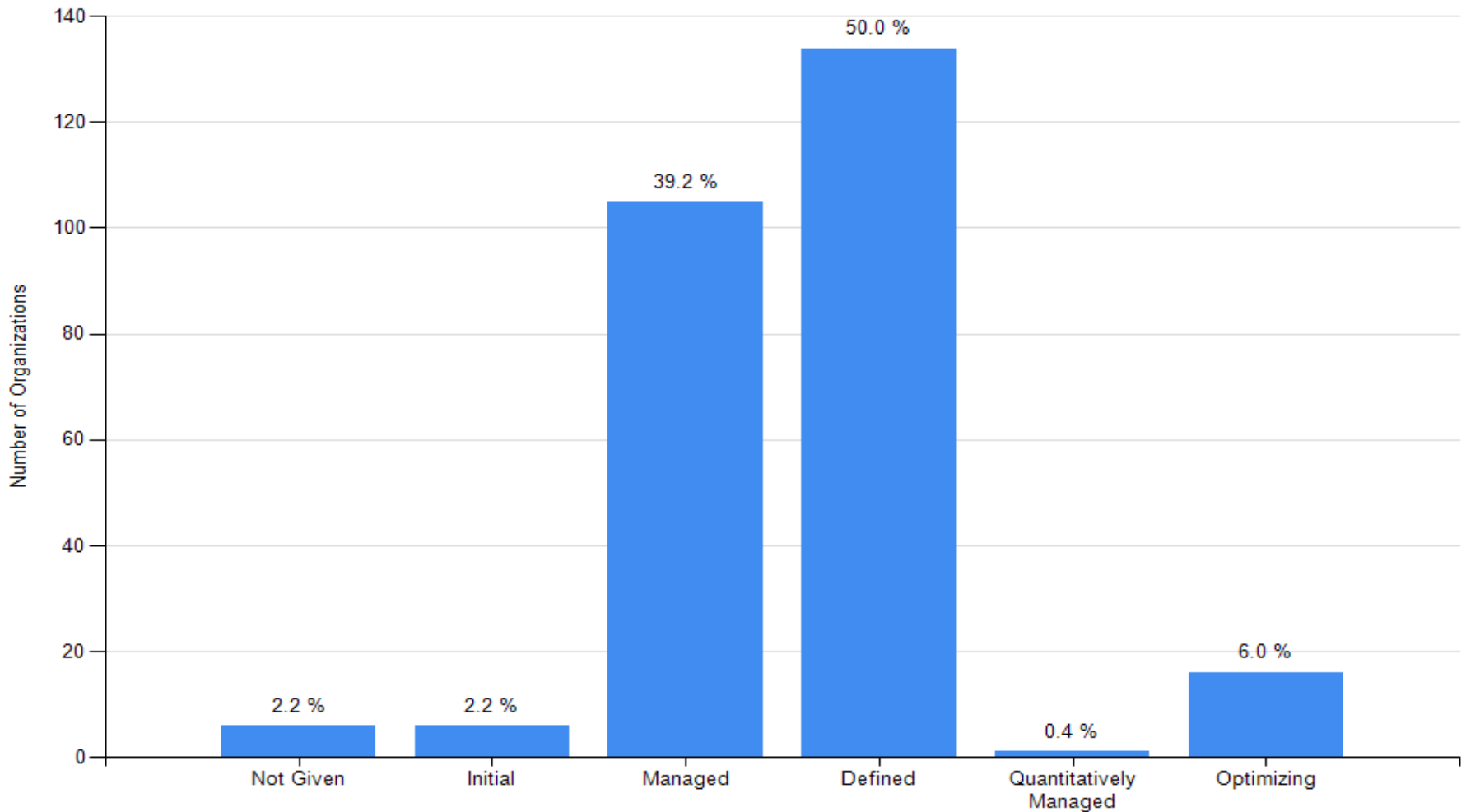
Process Maturity Profile by All Reporting Organizations	5
Process Maturity Profile by All Reporting Organizations (SVC Only)	6
Reporting Organization Categories	7
Process Maturity Profile by Reporting Organization Categories	8
Organization Size	9
Organization Size (SVC Only)	10
Maturity Profile by Organization Size	11
USA and non-USA Reporting Organization Categories	12
Maturity Profile by All Reporting Organizations in the U.S.	13
Maturity Profile by All Reporting Organizations based outside the U.S.	14
Countries Where Appraisals Have Been Performed	16
Number of Appraisals Reported to CMMI by Continent	17
Number of Appraisals Reported to CMMI by Continent (SVC only)	18
Number of Appraisals and Maturity Levels by Country	19
Most Appraisals Reported Per Year by Country	21
Number of SCAMPI-A Appraisals by Year	22
Trends in Community Maturity Profile	23
Terms Used in This Report.....	24
Contact Information.....	25

Process Maturity Profile by All Reporting Organizations



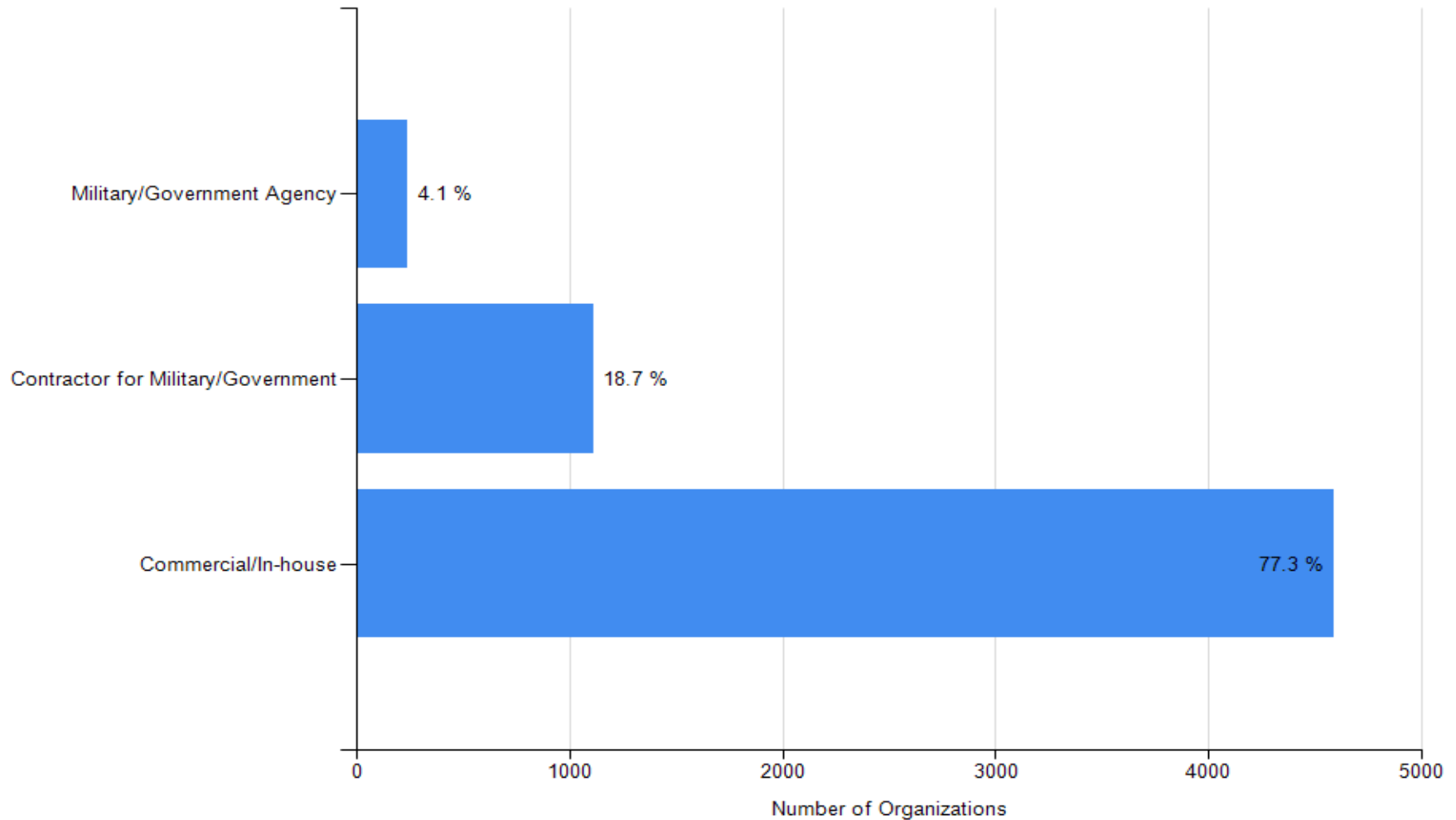
Based on the most recent appraisal of 6,010 organizations

Process Maturity Profile (SVC Only) by All Reporting Organizations



Based on the most recent appraisal of 268 organizations

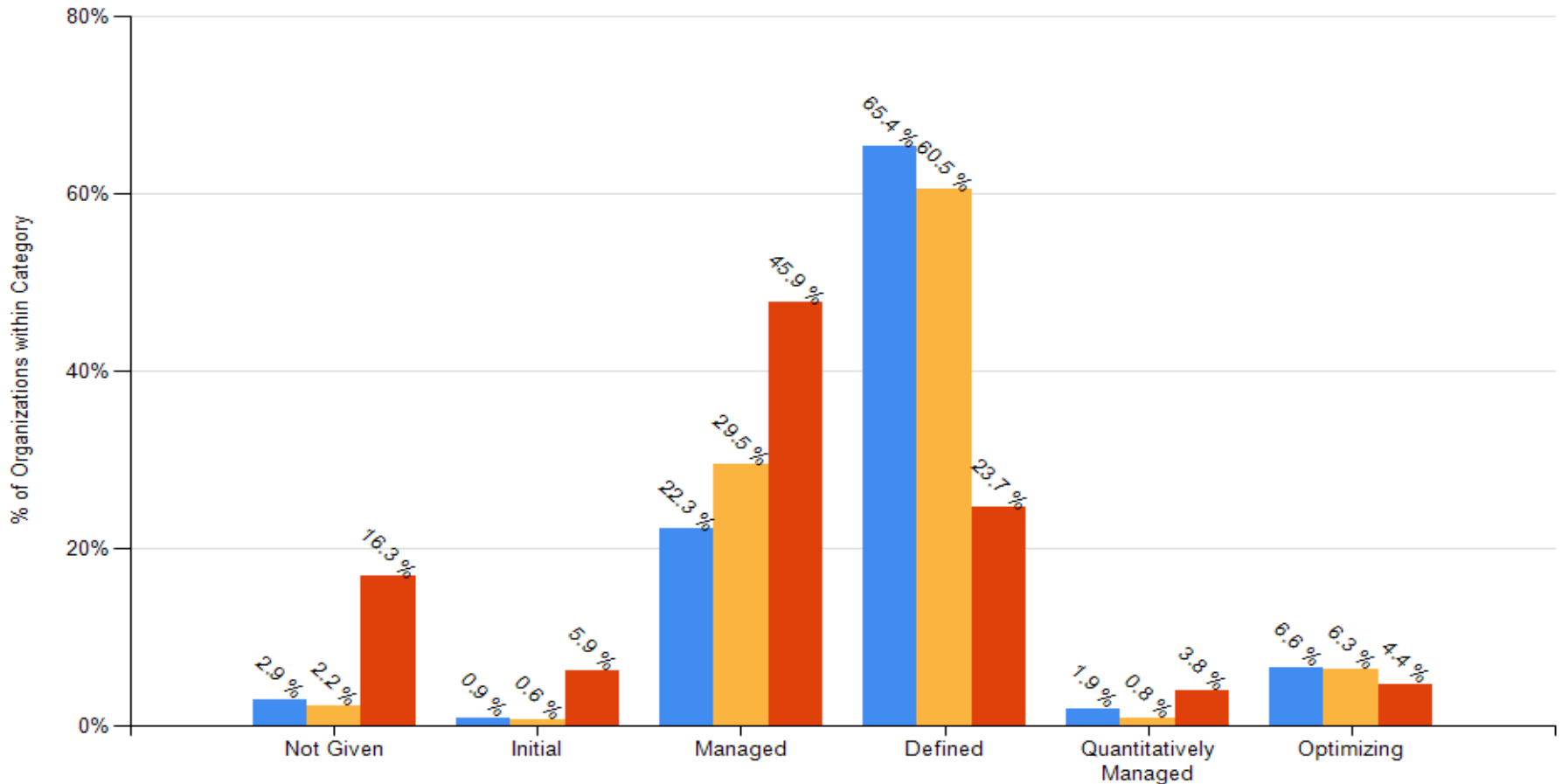
Reporting Organization Categories



Based on the most recent appraisal of 5,944 organizations reporting an organization category

Process Maturity Profile by Reporting Organization Categories

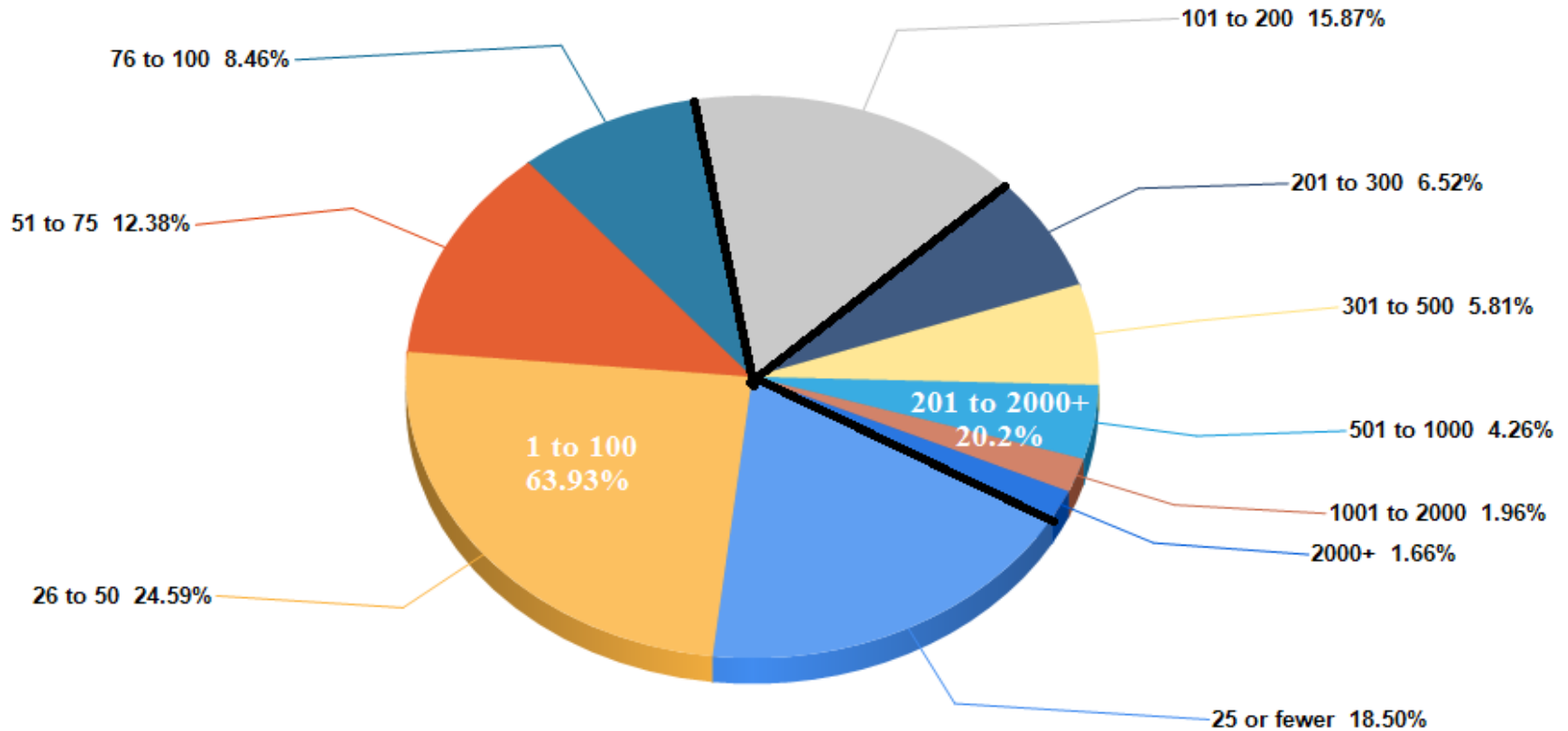
Commercial/In-house 4592 Contractor for Military/Government 1110 Military/Government Agency 242



Based on the most recent appraisal of 5,944 organizations reporting an organization category

Organization Size

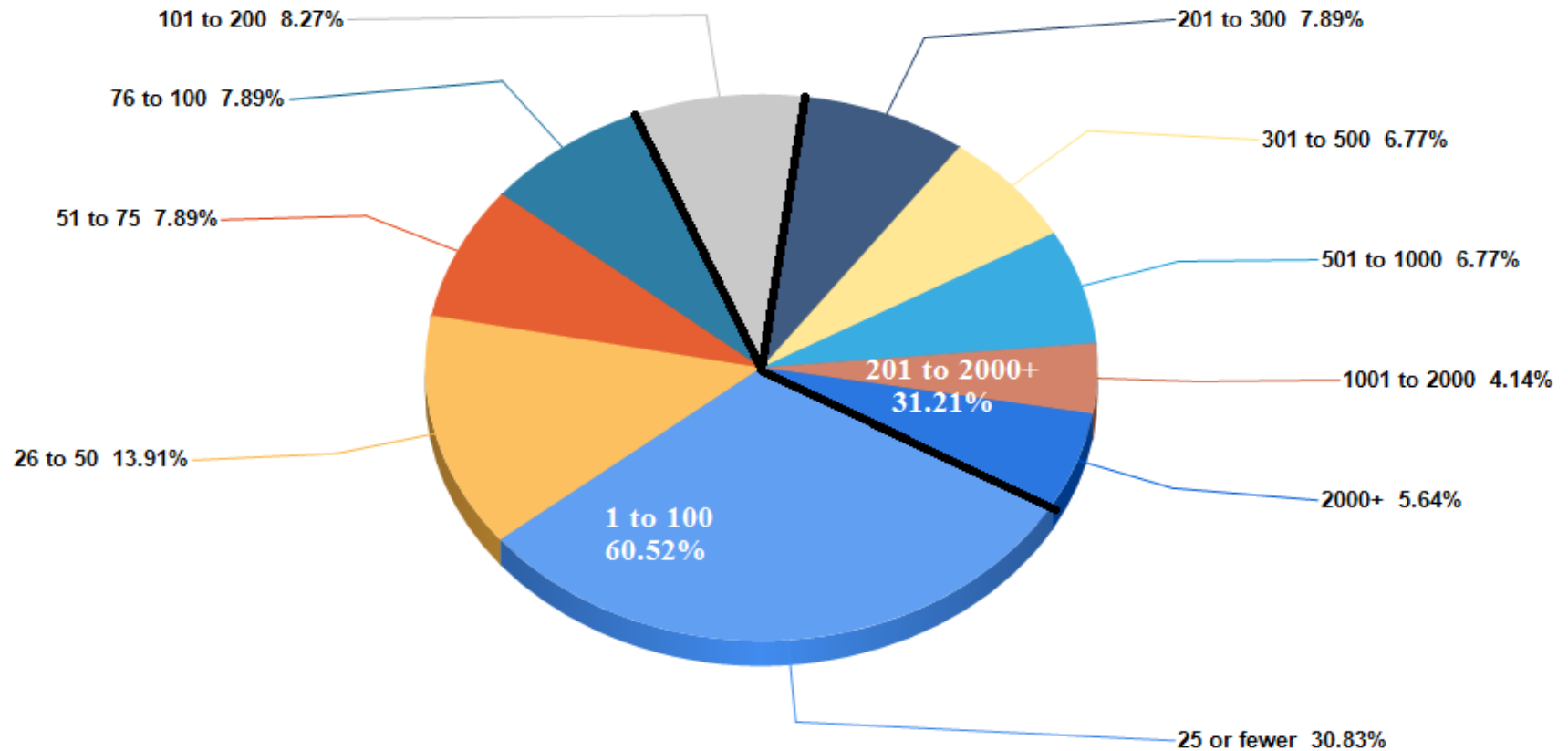
Based on the total number of employees within the area of the organization that was appraised.



Based on 5,969 organizations reporting size data

Organization Size (SVC Only)

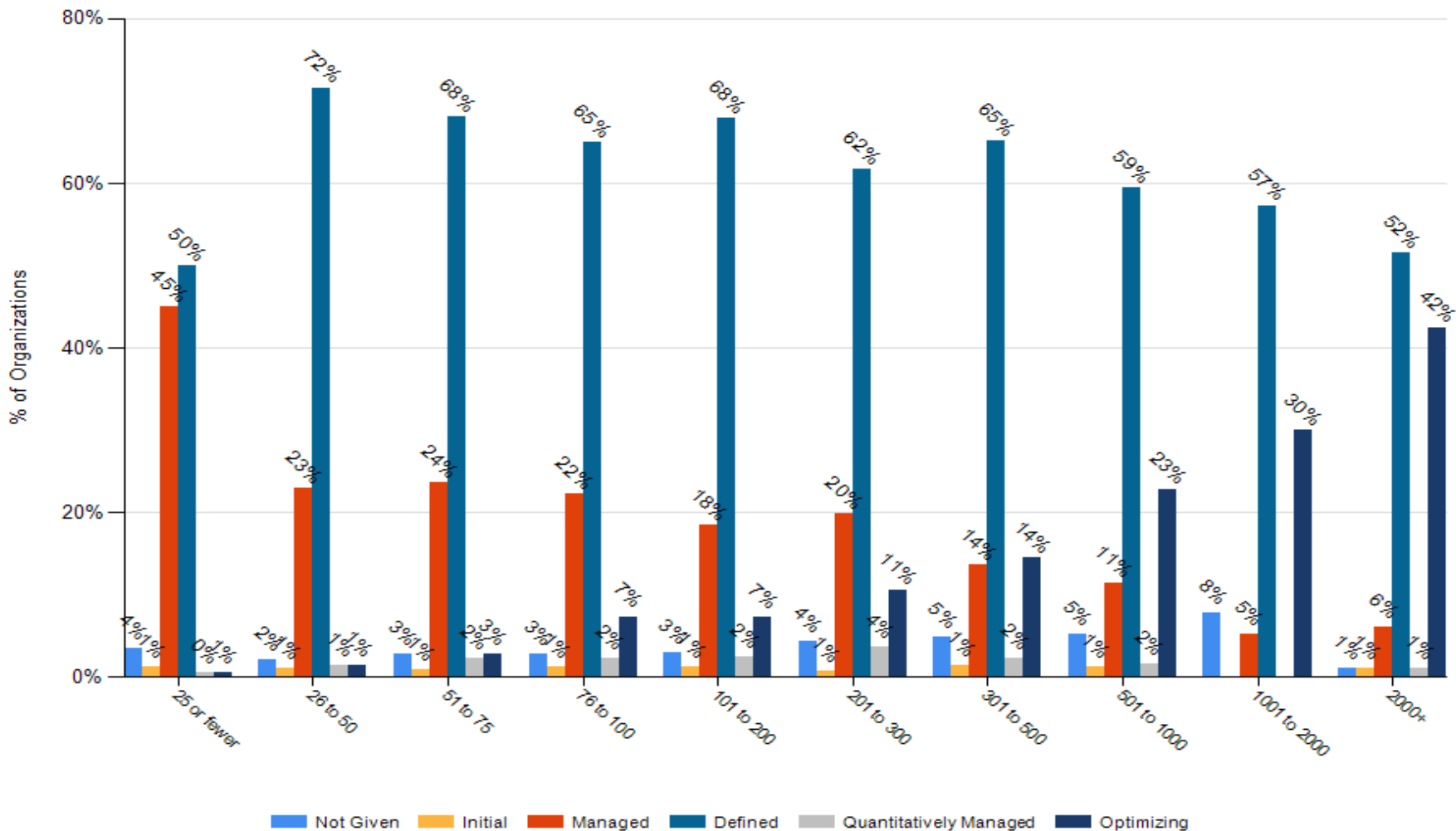
Based on the total number of employees within the area of the organization that was appraised.



Based on 266 organizations reporting size data

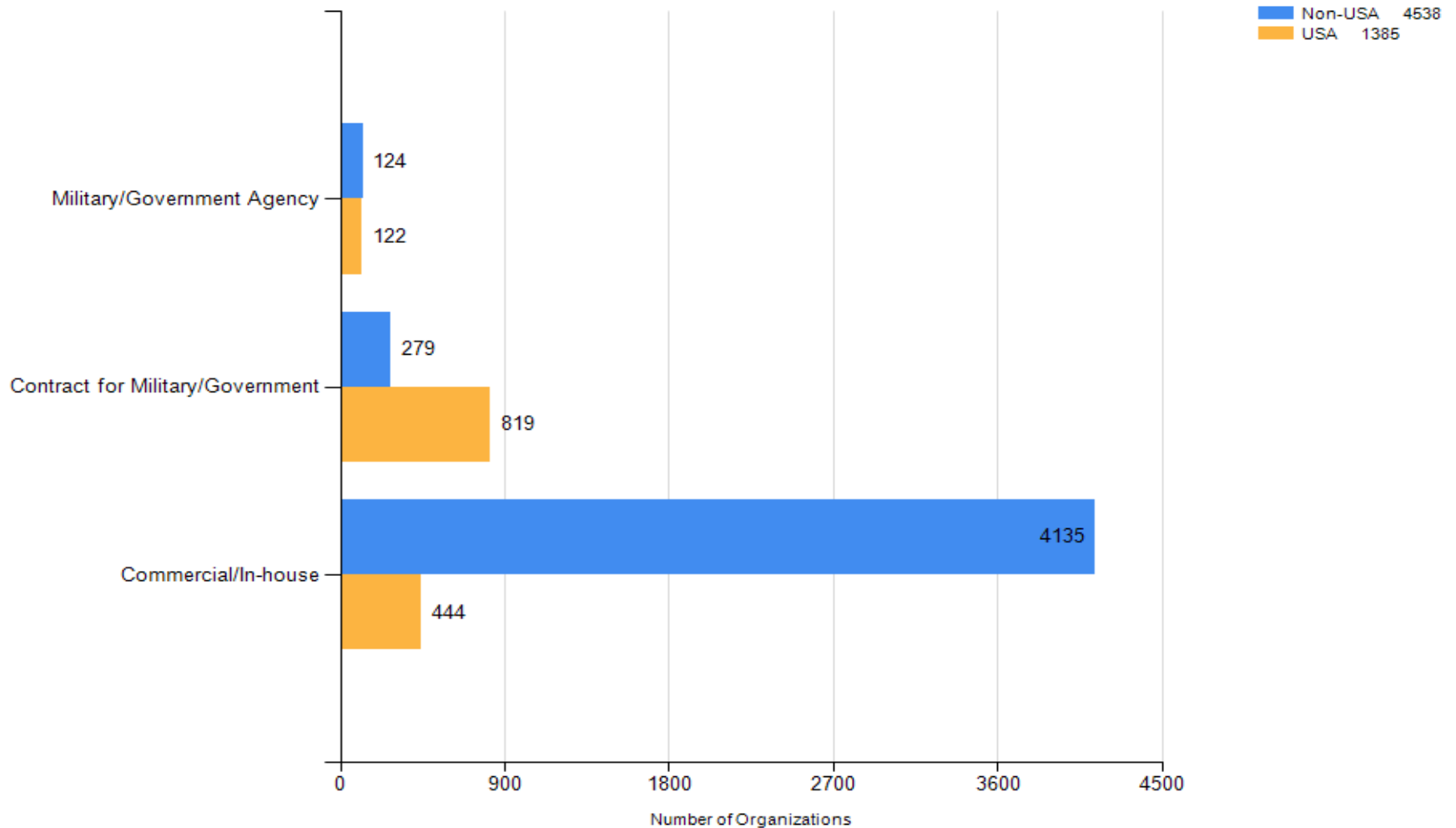
Maturity Profile by Organization Size

Based on the total number of employees within the area of the organization that was appraised.



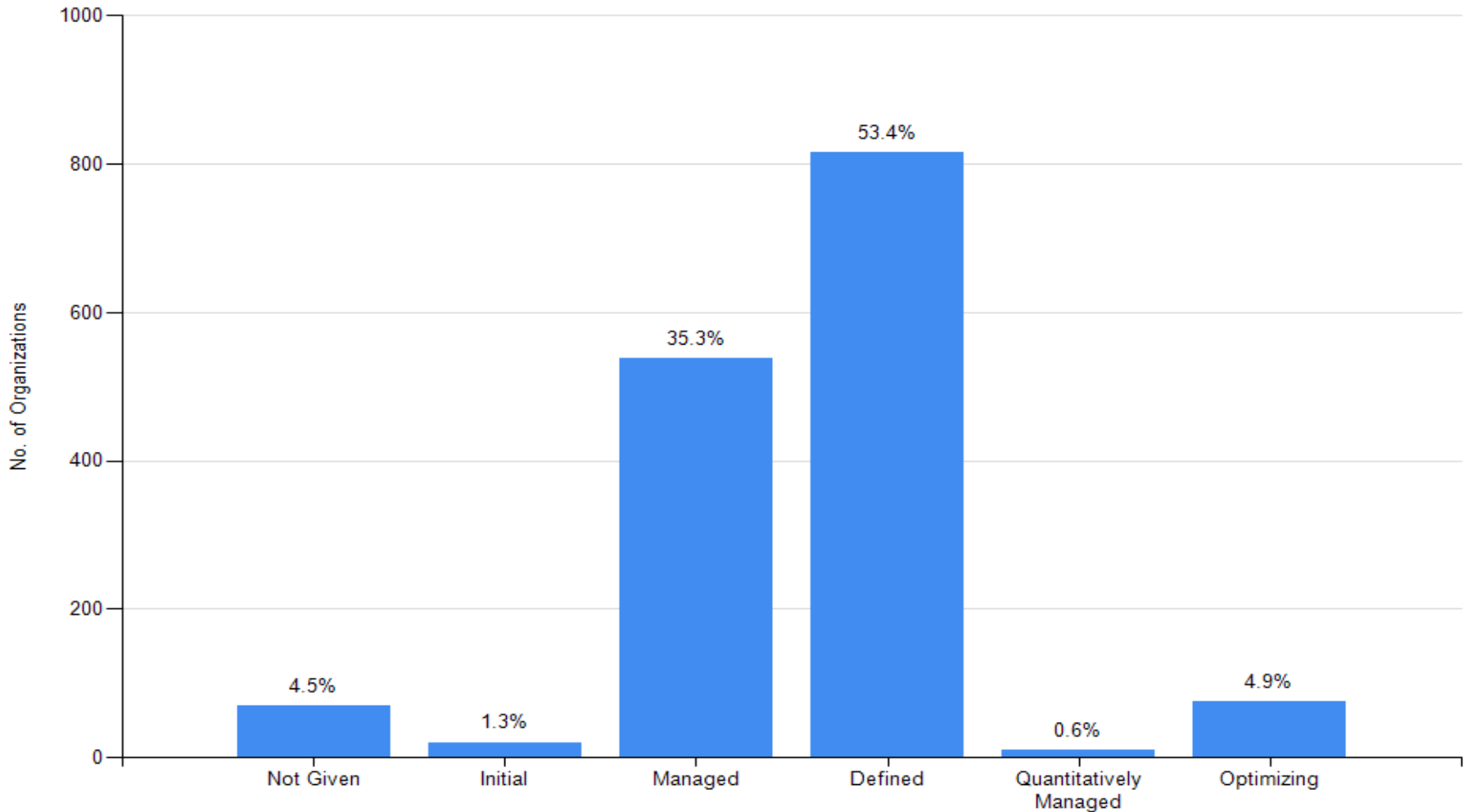
Based on 6,002 organizations reporting size data

U.S. & Non-U.S. Reporting Organization Categories



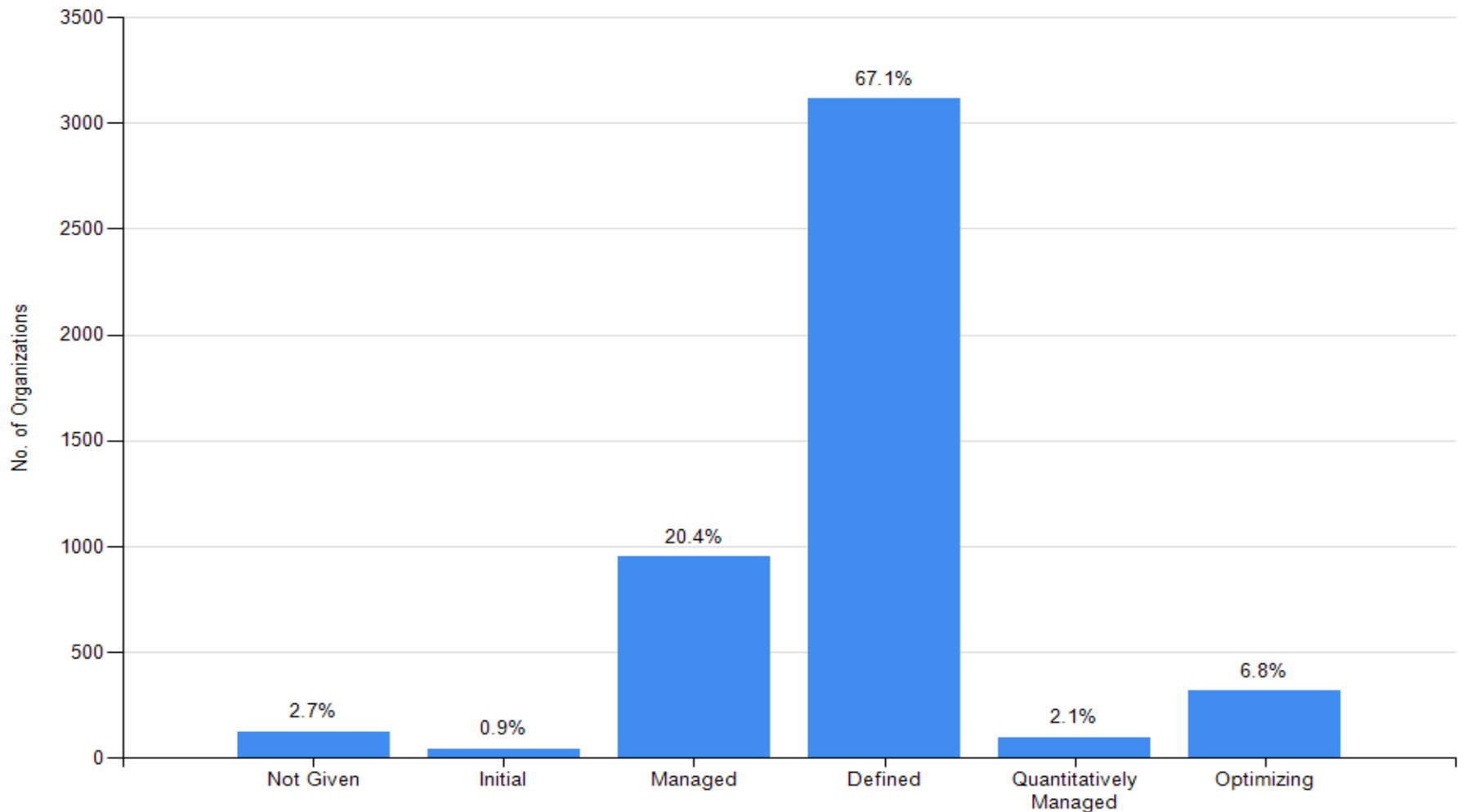
Based on the most recent appraisal of 5,923 organizations reporting an organization category

Maturity Profile by all Reporting Organizations in the U.S.



Based on 1,525 organizations in the U.S.

Maturity Profile by all Reporting Organizations based outside the U.S.



Based on 4,641 organizations outside the U.S.

Section 2 – Community Trends

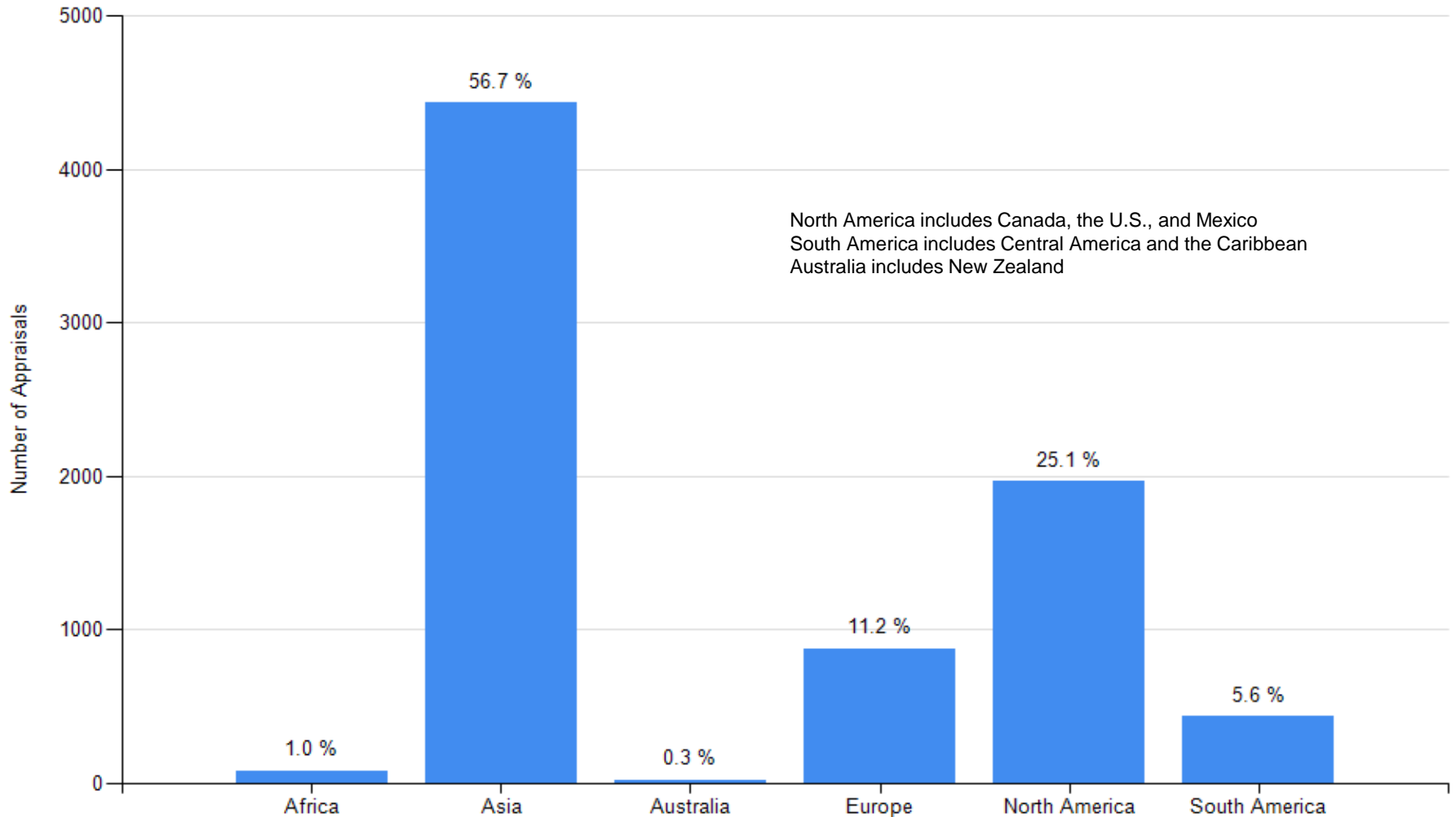
Appraisals are conducted through June 2013 and reported to the CMMI Institute by July 2013.

- 88 countries reporting appraisals
 - Most of the appraisals are from Asia and North America
- 94.5% of SCAMPI A appraisals from 2007 to 2012 were posted on PARS

Countries Where Appraisals Have Been Performed

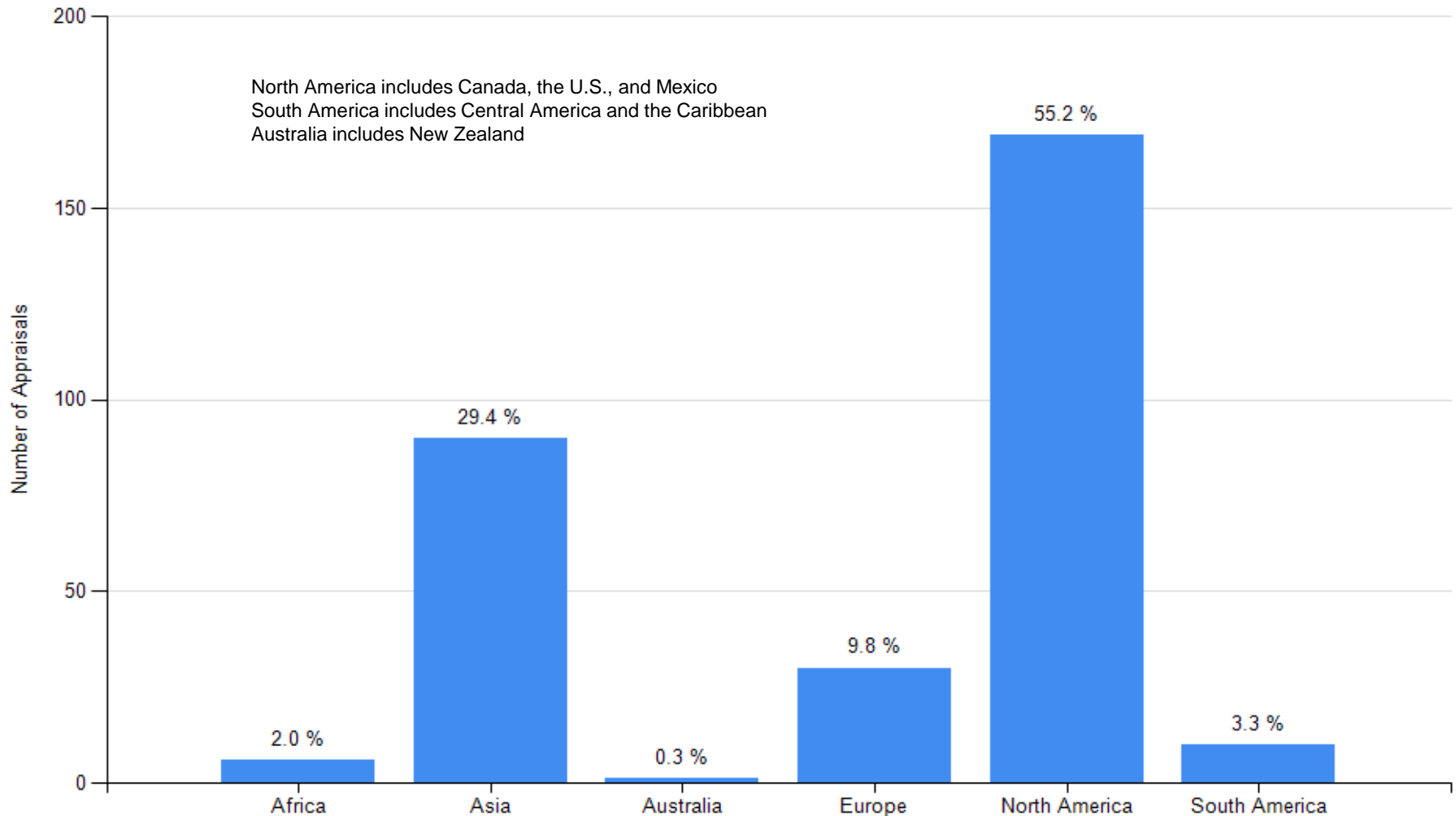
Angola	Argentina	Australia	Austria
Bahrain	Bangladesh	Belarus	Belgium
Brazil	Brunei Darussalam	Bulgaria	Canada
Chile	China	Colombia	Costa Rica
Croatia	Cuba	Cyprus	Czech Republic
Denmark	Dominican Republic	Egypt	El Salvador
Finland	France	Germany	Ghana
Greece	Guatemala	Hong Kong	Hungary
India	Indonesia	Iraq	Ireland
Israel	Italy	Jamaica	Japan
Jordan	Kenya	Korea, Republic of	Kuwait
Latvia	Lebanon	Lithuania	Luxembourg
Macedonia	Malawi	Malaysia	Mauritius
Mexico	Morocco	Nepal	Netherlands
New Zealand	Norway	Pakistan	Panama
Paraguay	Peru	Philippines	Poland
Portugal	Qatar	Romania	Russia
Saudi Arabia	Singapore	Slovakia	South Africa
Spain	Sri Lanka	Sweden	Switzerland
Syrian Arab Republic	Taiwan	Thailand	Tunisia
Turkey	Ukraine	United Arab Emirates	United Kingdom
United States	Uruguay	Venezuela	Viet Nam

Number of Appraisals Reported by Continent



Based on 7,828 appraisals

Number of Appraisals Reported by Continent (SVC Only)



Based on 306 appraisals

Number of Appraisals and Maturity Levels by Country

Country	Appraisals	Maturity Level					Country	Appraisals	Maturity Level				
		1	2	3	4	5			1	2	3	4	5
Angola	10 or fewer						Germany	87	12	34	41	0	0
Argentina	90	0	47	36	0	7	Ghana	10 or fewer					
Australia	16	0	5	9	0	2	Greece	10 or fewer					
Austria	10 or fewer						Guatemala	10 or fewer					
Bahrain	10 or fewer						Hong Kong	17	0	6	7	0	4
Bangladesh	12	0	0	12	0	0	Hungary	10 or fewer					
Belarus	10 or fewer						India	755	1	35	552	5	162
Belgium	15	1	6	8	0	0	Indonesia	10 or fewer					
Brazil	188	1	96	79	1	11	Iraq	10 or fewer					
Brunei Darussalam	10 or fewer						Ireland	10 or fewer					
Bulgaria	10 or fewer						Israel	18	1	0	11	0	6
Canada	48	2	18	22	1	5	Italy	72	0	35	36	0	1
Chile	50	2	24	19	0	5	Jamaica	10 or fewer					
China	2703	2	85	2458	80	78	Japan	207	9	52	123	10	13
Colombia	61	1	20	26	3	11	Jordan	10 or fewer					
Costa Rica	10 or fewer						Kenya	10 or fewer					
Croatia	10 or fewer						Korea, Republic of	207	0	72	111	15	9
Cuba	10 or fewer						Kuwait	10 or fewer					
Cyprus	10 or fewer						Latvia	10 or fewer					
Czech Republic	10 or fewer						Lebanon	10 or fewer					
Denmark	10 or fewer						Luxembourg	10 or fewer					
Dominican Republic	10 or fewer						Macedonia	10 or fewer					
Egypt	53	1	26	24	0	2	Malawi	10 or fewer					
El Salvador	10 or fewer						Malaysia	64	0	11	50	0	3
Finland	10 or fewer						Mauritius	10 or fewer					
France	151	3	97	50	0	1	Mexico	189	0	95	78	4	12

Number of Appraisals and Maturity Levels by Country

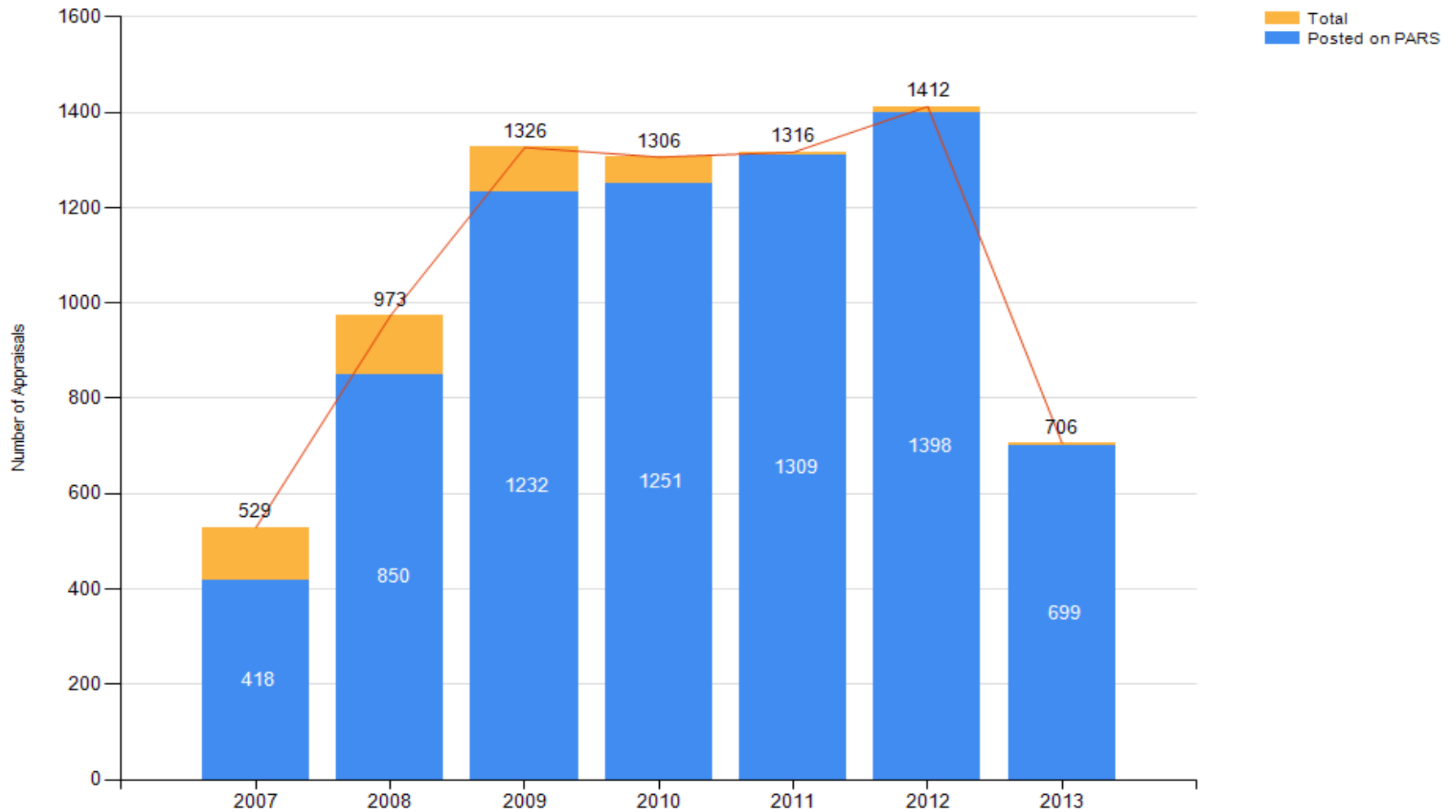
Country	Appraisals	Maturity Level					Country	Appraisals	Maturity Level					
		1	2	3	4	5			1	2	3	4	5	
Morocco	11	1	8	1	1	0	South Africa	10 or fewer						
Nepal	10 or fewer						Spain	298	1	176	105	3	13	
Netherlands	17	1	6	10	0	0	Sri Lanka	18	0	2	15	0	1	
New Zealand	10 or fewer						Sweden	10 or fewer						
Norway	10 or fewer						Switzerland	14	0	10	3	0	1	
Pakistan	29	1	22	5	0	1	Syrian Arab Republic	10 or fewer						
Panama	10 or fewer						Taiwan	136	1	53	75	6	1	
Paraguay	10 or fewer						Thailand	74	0	20	49	0	5	
Peru	31	0	11	18	0	2	Tunisia	10 or fewer						
Philippines	21	0	4	11	1	5	Turkey	39	0	0	36	0	3	
Poland	11	0	5	5	1	0	Ukraine	10 or fewer						
Portugal	31	0	13	14	0	4	United Arab Emirates	16	1	4	9	0	2	
Qatar	10 or fewer						United Kingdom	89	3	35	43	1	7	
Romania	15	1	4	10	0	0	United States	1665	21	643	911	9	81	
Russia	11	0	2	5	0	4	Uruguay	10 or fewer						
Saudi Arabia	19	0	2	12	2	3	Venezuela	10 or fewer						
Singapore	23	0	5	15	2	1	Viet Nam	40	0	0	34	1	5	
Slovakia	10 or fewer													

Most Appraisals Reported Per Year by Country

Based on appraisals reported with a Maturity Level

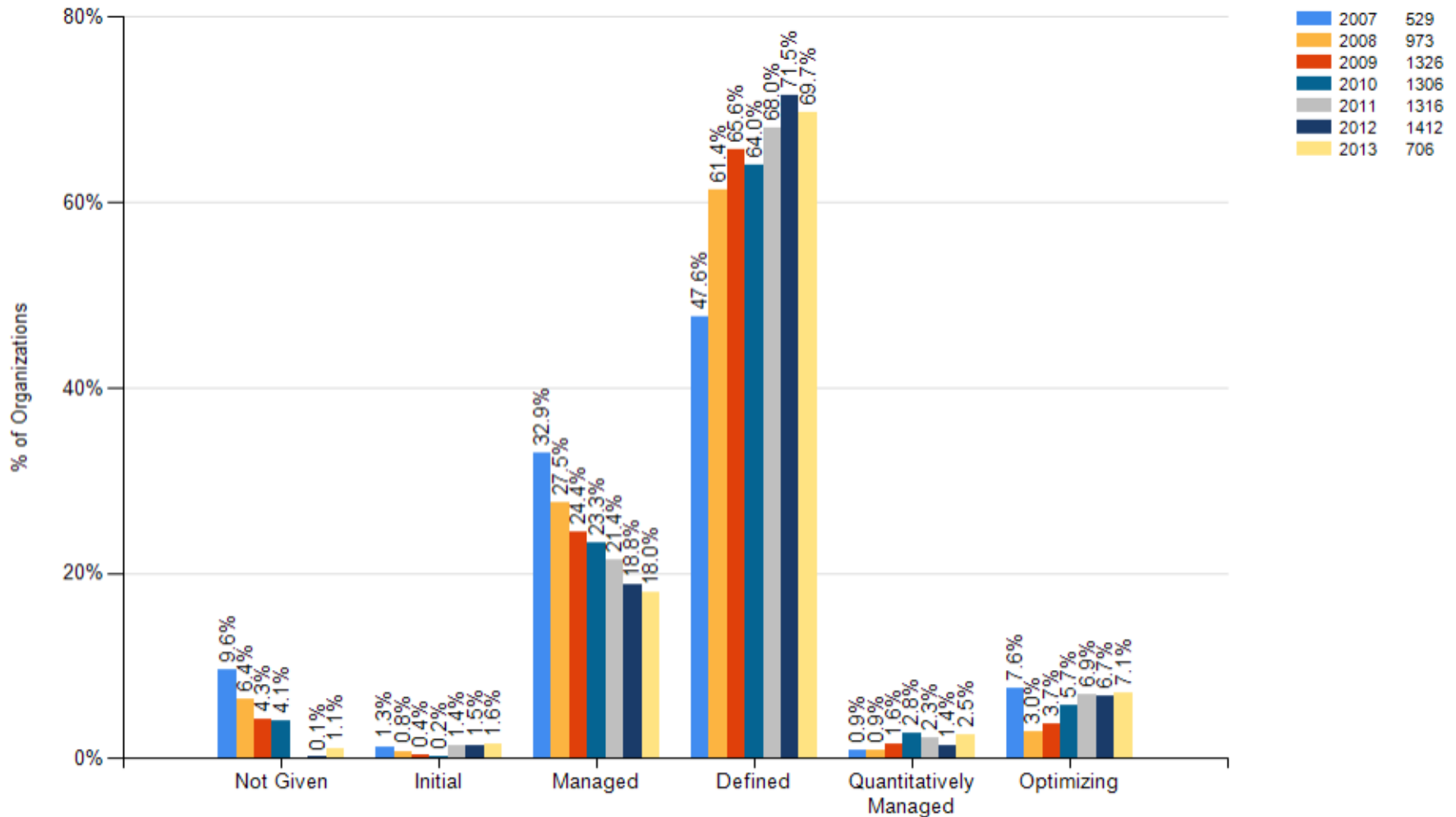
Country	2007	2008	2009	2010	2011	2012	2013	Total
China	104	278	476	499	508	562	276	2703
United States	129	206	276	295	295	319	145	1665
India	76	83	126	106	135	138	91	755
Spain	14	30	73	40	62	54	25	298
Japan	12	46	34	33	43	24	15	207
Korea, Republic Of	19	29	27	34	43	46	9	207
Mexico	4	18	31	35	31	46	24	189
Brazil	14	27	39	40	29	25	14	188
France	12	27	31	27	26	17	11	151
Taiwan	17	29	19	24	25	16	6	136

Number of SCAMPI A Appraisals Reported by Year



Based on 7,568 appraisals

Trends in Community Maturity Profile



2007	529
2008	973
2009	1326
2010	1306
2011	1316
2012	1412
2013	706

Based on a cumulative view of the most recent 7,568 appraisals of organizations up through the year indicated.

Terms Used In This Report

Company	Parent of the appraised entity. A company can be a commercial or non-commercial firm, a for-profit or not-for-profit business, a research and development unit, a higher education unit, a government agency, a branch of service, etc.
Organization	Appraised entity. The organization unit to which the appraisal results apply. An appraised entity can be the entire company, a selected business unit, unit supporting a particular product line or service, etc.
PARS	The Publish Appraisal Results (PARS) webpage contains CMMI appraisals published at the request of the appraisal sponsor. Available at the following URL: http://sas.cmmiinstitute.com/PARS/

Contact Information

CMMI Customer Relations	+1 412 282 4020
CMMI Fax Number	+1 412 282 4030
Internet Address	http://www.cmmiinstitute.com
E-mail Address	info@cmmiinstitute.com
Mailing Address	CMMI Institute 11 Stanwix Street, Suite 1150 Pittsburgh, PA 15222 USA

NO WARRANTY

- THIS MATERIAL IS FURNISHED ON AN “AS-IS” BASIS. THE CMMI INSTITUTE MAKES NO WARRANTIES OF ANY KIND, EITHER EXPRESSED OR IMPLIED, AS TO ANY MATTER INCLUDING, BUT NOT LIMITED TO, WARRANTY OF FITNESS FOR PURPOSE OR MERCHANTABILITY, EXCLUSIVITY, OR RESULTS OBTAINED FROM USE OF THE MATERIAL. CMMI INSTITUTE DOES NOT MAKE ANY WARRANTY OF ANY KIND WITH RESPECT TO FREEDOM FROM PATENT, TRADEMARK, OR COPYRIGHT INFRINGEMENT.