



CMMI[®] Institute

CMMI Maturity Profile Report

30 June 2016



Executive Summary

- Since 2007 13,719 Appraisals have been reported
 - Appraisals have increased on average 9% year over year since 2007
 - 76% of appraised organizational units have 100 or fewer employees.
 - Only 11% of reported appraisals are high maturity (Level 4 or 5) organizations
 - The number of agile organizations appraised has grown from less than 30% of organizations appraised in 2009 to more than 70% in 2015
 - Companies who reappraise continues to increase and is currently at 70%
- Appraisals increased 17% in 2015 and 19% so far in 2016
 - Appraisals reported from China, United States, India and Mexico are increasing at a rapid rate



Purpose

To characterize the adoption of CMMI for Development, CMMI for Services, CMMI for Acquisition and the People CMM since 2007.



Overview

The Maturity Profile tracks CMMI adoption trends by:

- Who's Using the CMMI?
- Total Appraisals
- New versus Re-appraisals (including retention rate trends)
- Appraisals by Organization Size
- Appraisals by Maturity Level
- Appraisals by CMMI Constellation (CMMI for Development, Services, Acquisition) and the People CMM
- Appraisals by Geography (Continent and Country)
- Appraisals of Agile Organizations
- Appraisals by Industry

Results are from Standard CMMI Appraisal Method for Process Improvement (SCAMPISM) V1.1/V1.2/V1.3 Class A appraisals using Capability Maturity Model Integration (CMMI V1.1/V1.2/V1.3 – all constellations) and People CMM (V1/V2). The reports contained in this document were compiled with data on SCAMPI A appraisal results delivered 1 January 2007 – 30 June 2016.



Who Uses CMMI®?

<http://cmmiinstitute.com/who-uses-cmmi>



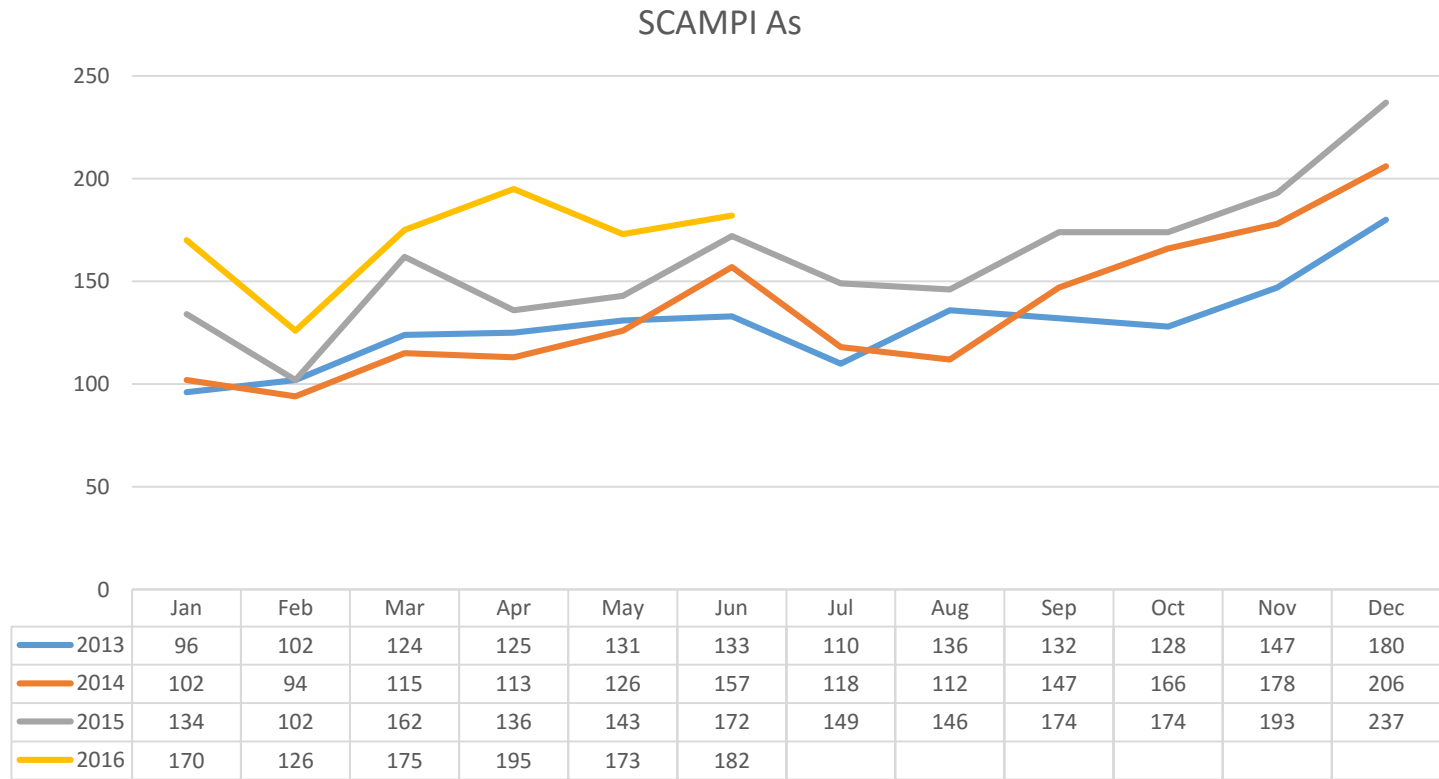
Total Appraisals

13,719

**appraisals have been
completed between
1 January 2007 and
30 June 2016**



Appraisals by Month January 2013 - June 2016



2013
1,544

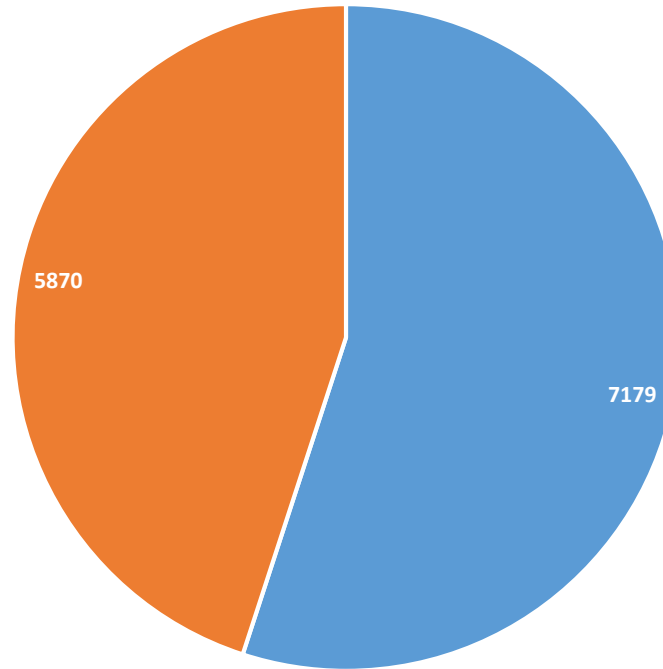
2014
1,634

2015
1,922

2016
1,021



New Appraisals and Reappraisals

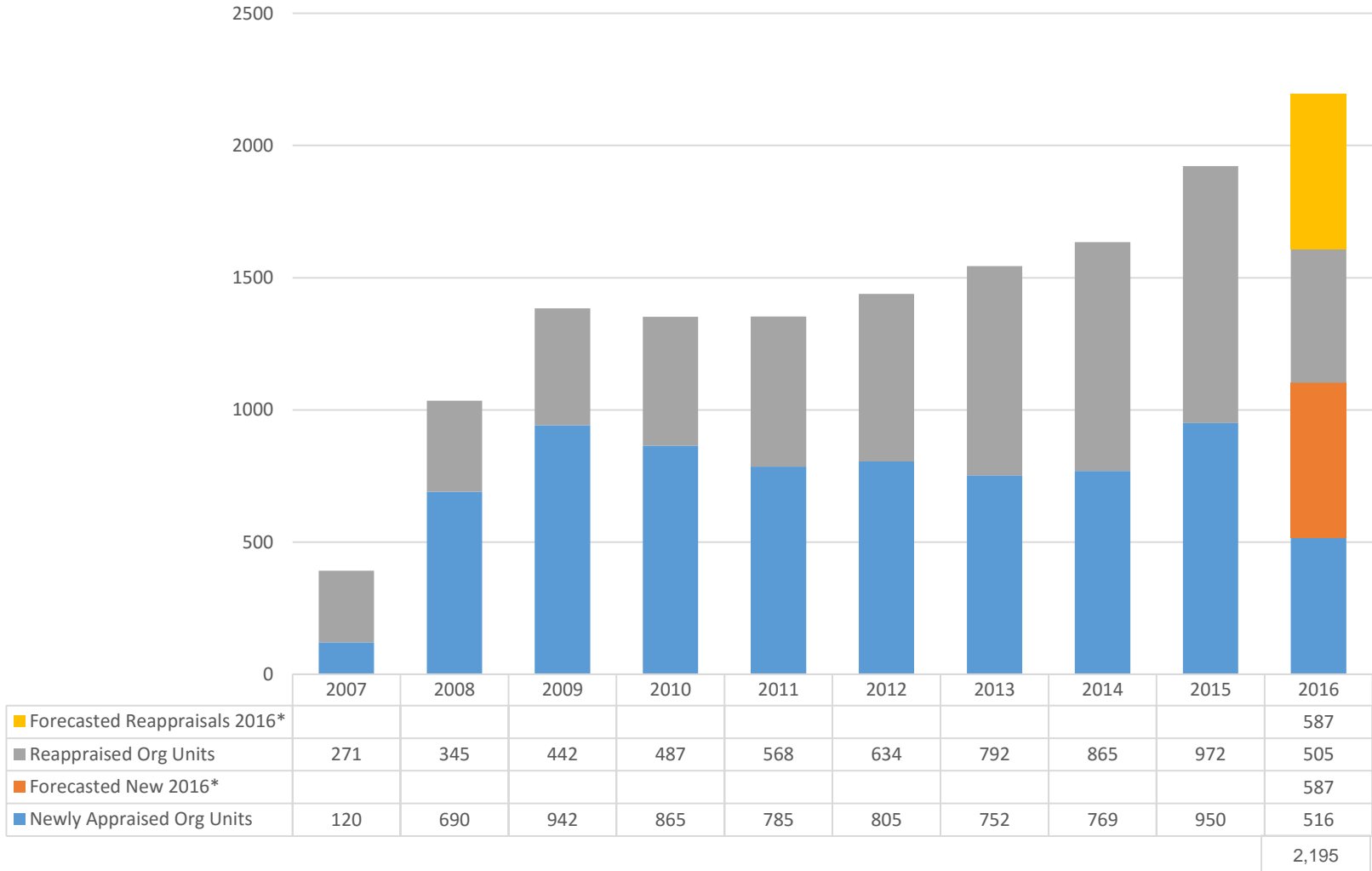


■ New Appraisals ■ Reappraisals



Total Appraisals 2007 – 2016*

New and Reappraised



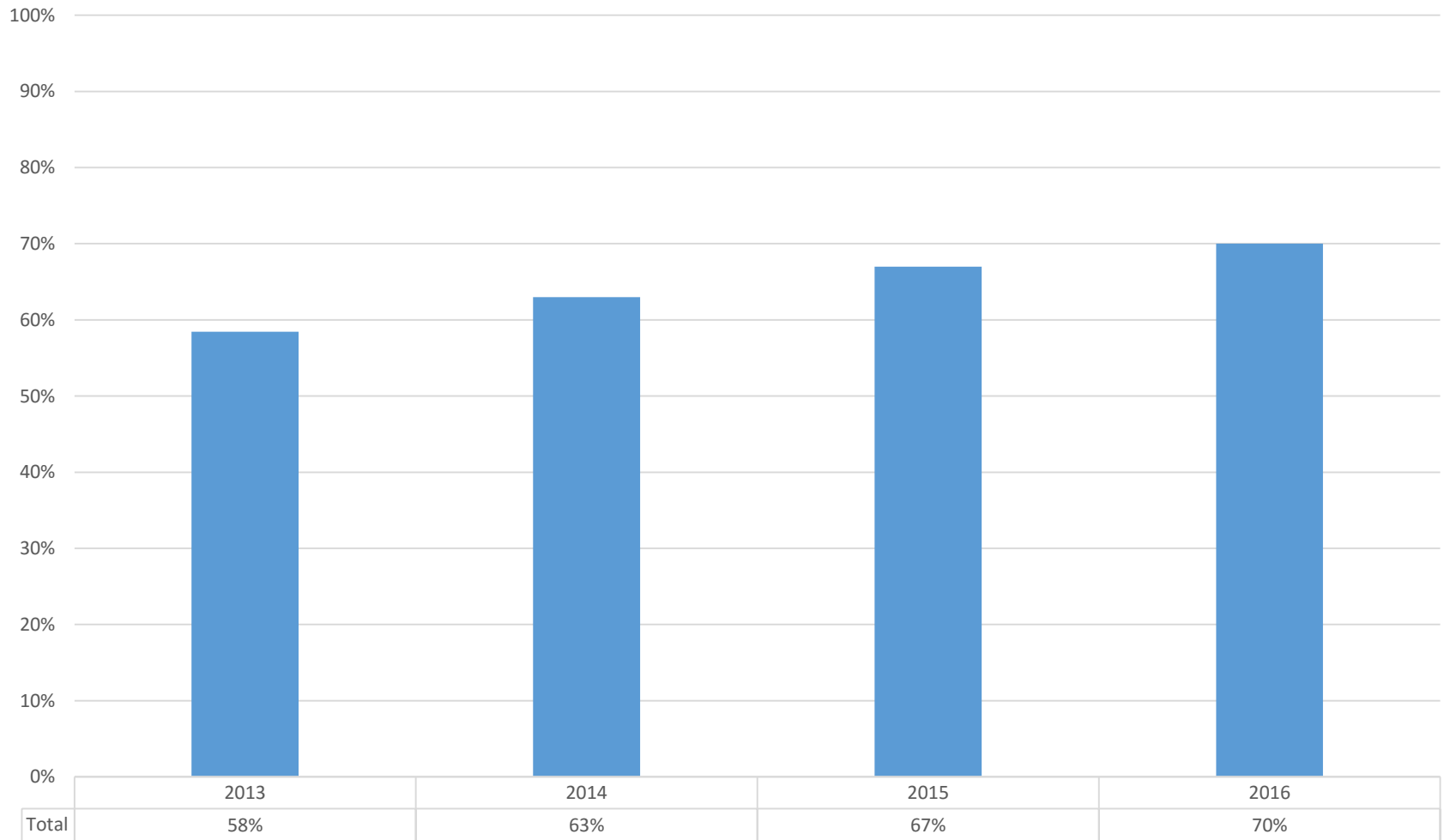
Based on 13,719 Actual CMMI-SCAMPI A Deliveries; 1,096 Forecasted for 2016*
 1 January 2007 – 30 June 2016



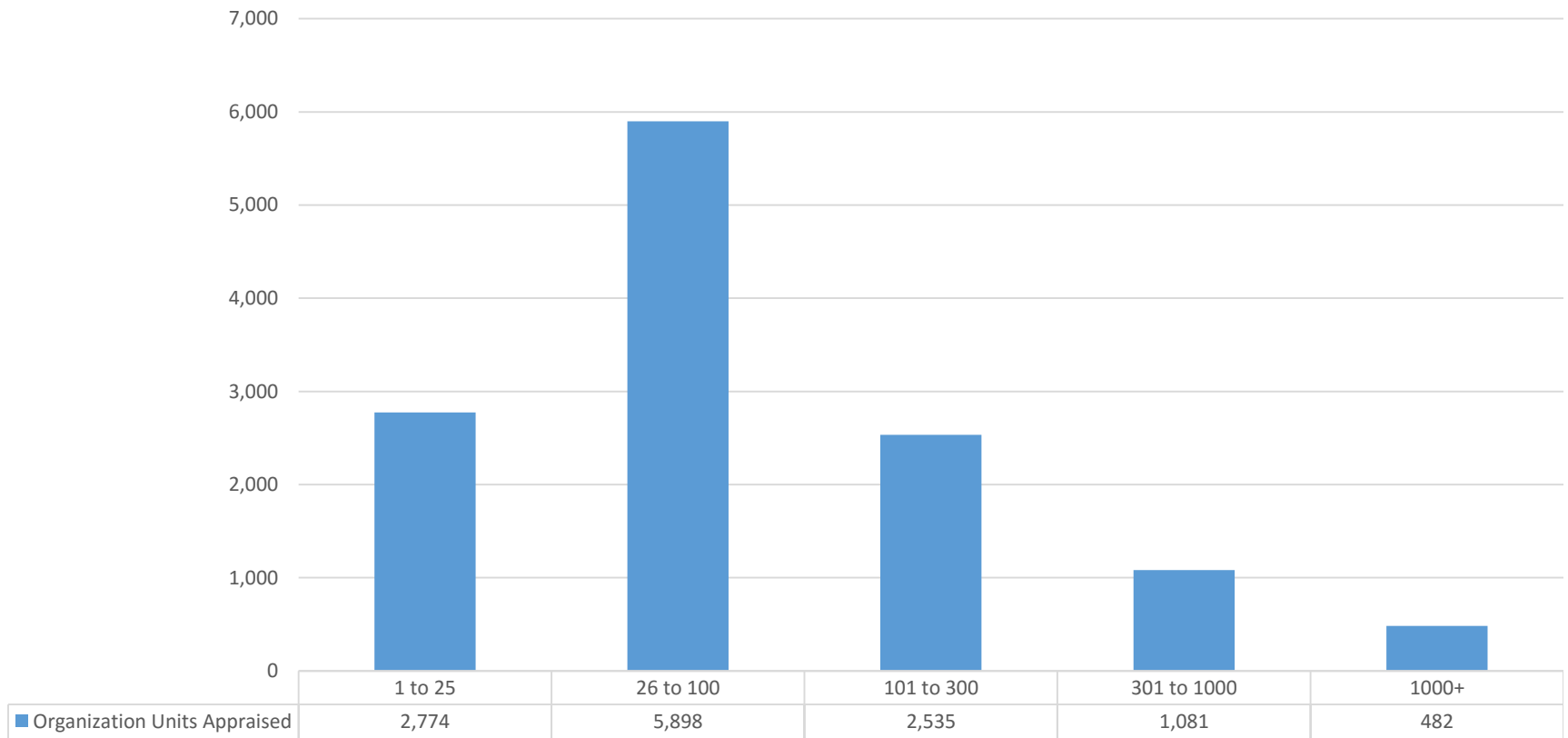
CMMI Institute

Appraisal Retention Rate

Appraisal Retention Rate 2013 - 2016 YTD



Appraisals by Organization Unit Size



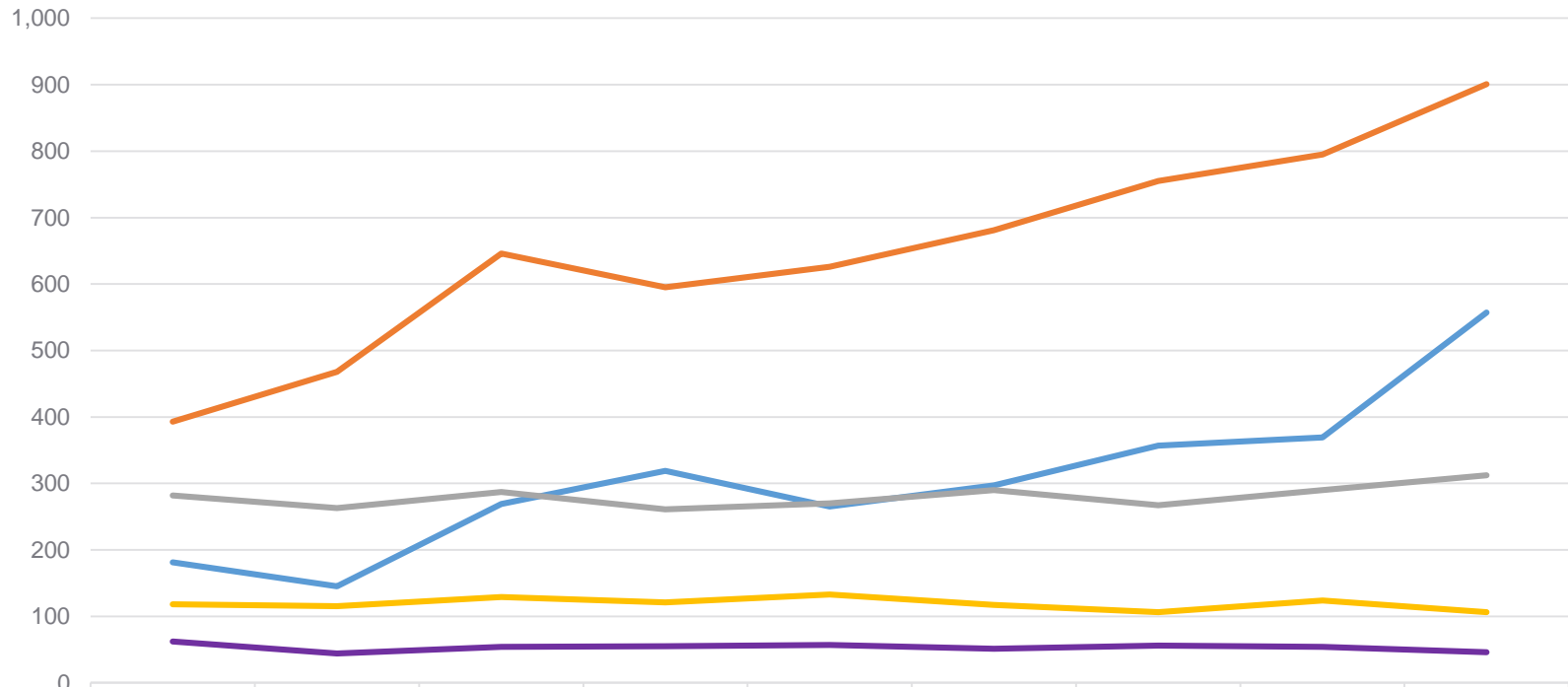
Based on 12,770 organizations reporting the total number of employees within the organizational unit being appraised; this data has not been collected on all appraisal deliveries
1 January 2007 – 30 June 2016



CMMI Institute

Appraisals by Organization Unit Size Trends

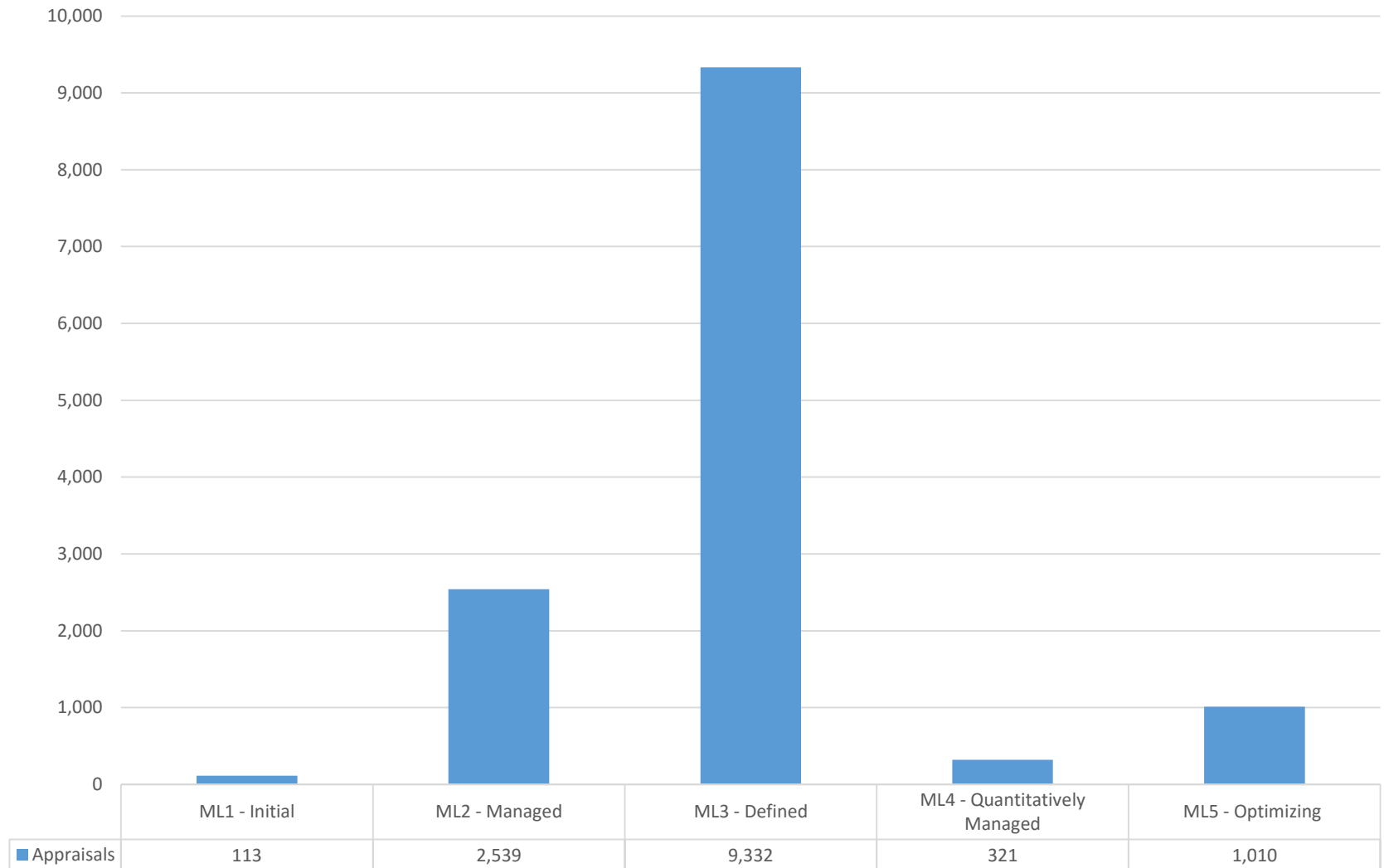
Appraised Organization Unit Size Trends



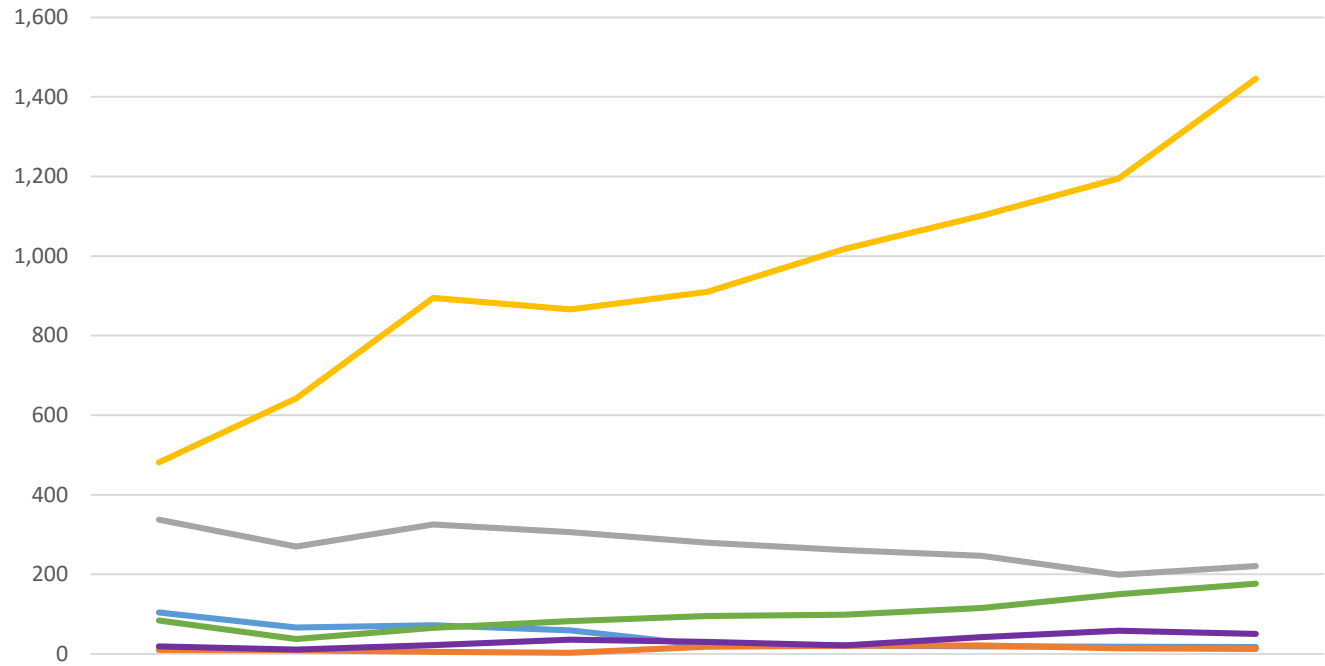
	2007	2008	2009	2010	2011	2012	2013	2014	2015
Under 26 Employees	181	145	269	319	265	297	357	369	557
26 to 100 Employees	393	468	646	595	626	681	755	795	901
101 to 300 Employees	282	263	287	261	270	290	267	290	312
301 to 1000 Employees	118	115	129	121	133	117	106	124	106
Over 1000 Employees	62	44	54	55	57	51	56	54	46



Appraisals by Maturity Level



Appraisals by Maturity Level 2007 - 2015

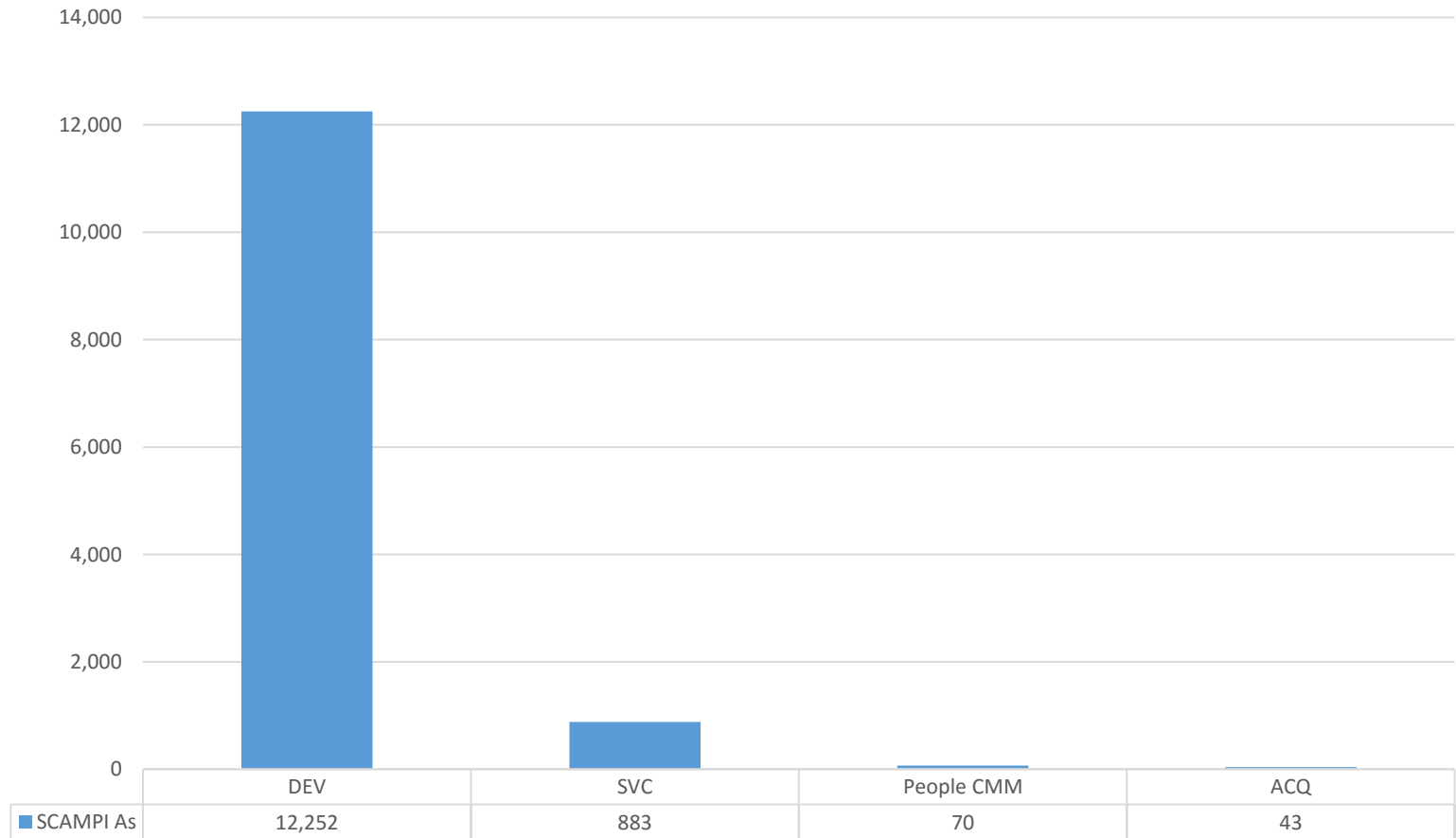


	2007	2008	2009	2010	2011	2012	2013	2014	2015
Not Given	104	66	72	59	21	21	19	18	17
ML1 - Initial	10	9	5	3	18	20	21	14	12
ML2 - Managed	337	270	325	306	279	261	246	199	221
ML3 - Defined	481	642	895	866	910	1,018	1,101	1,195	1,446
ML4 - Quantitatively Managed	19	11	22	36	30	21	42	58	50
ML5 - Optimizing	84	37	65	82	95	98	115	150	176

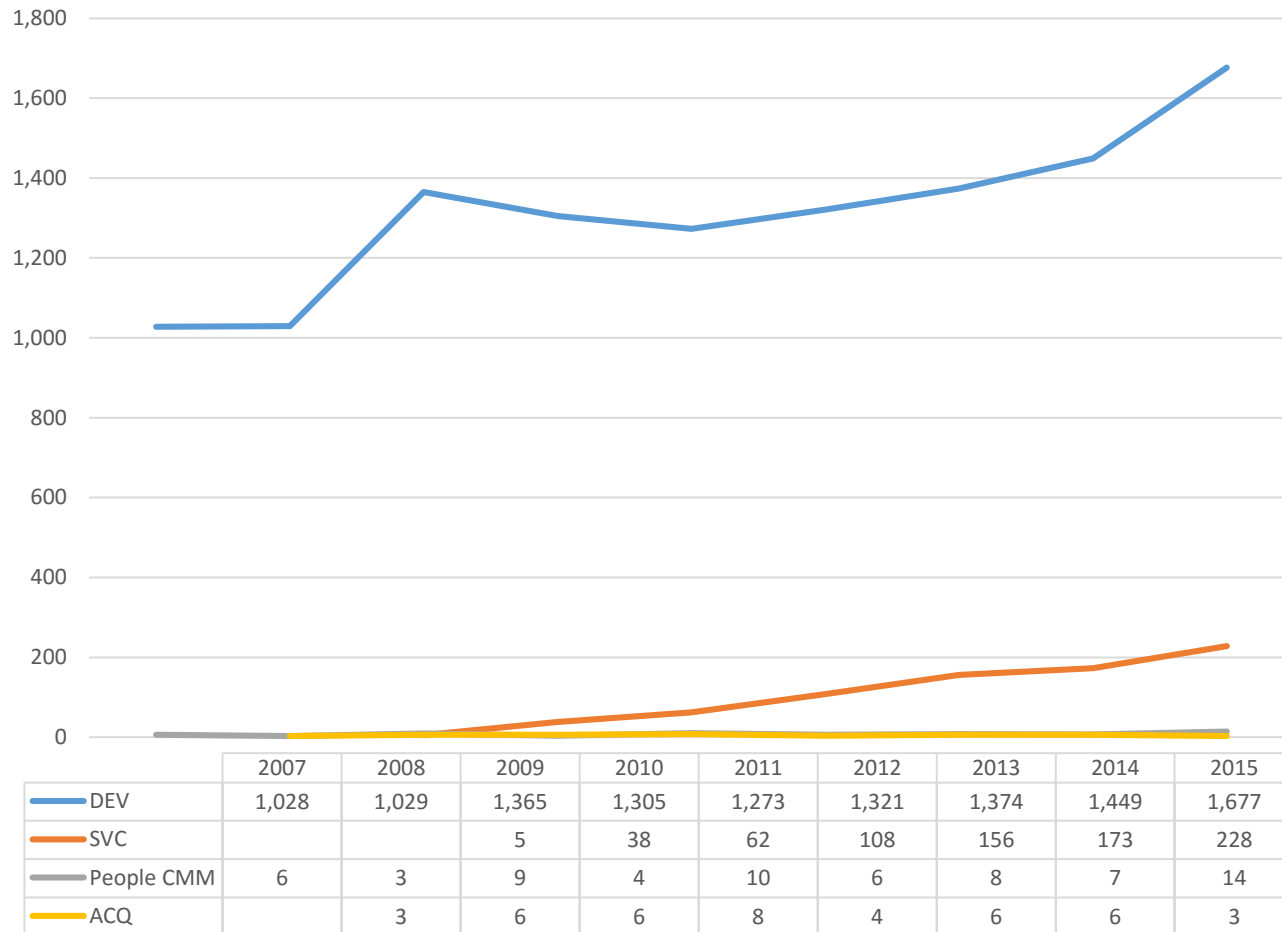
2007	2008	2009	2010	2011	2012	2013	2014	2015
1,035	1,035	1,384	1,352	1,353	1,439	1,544	1,634	1,922



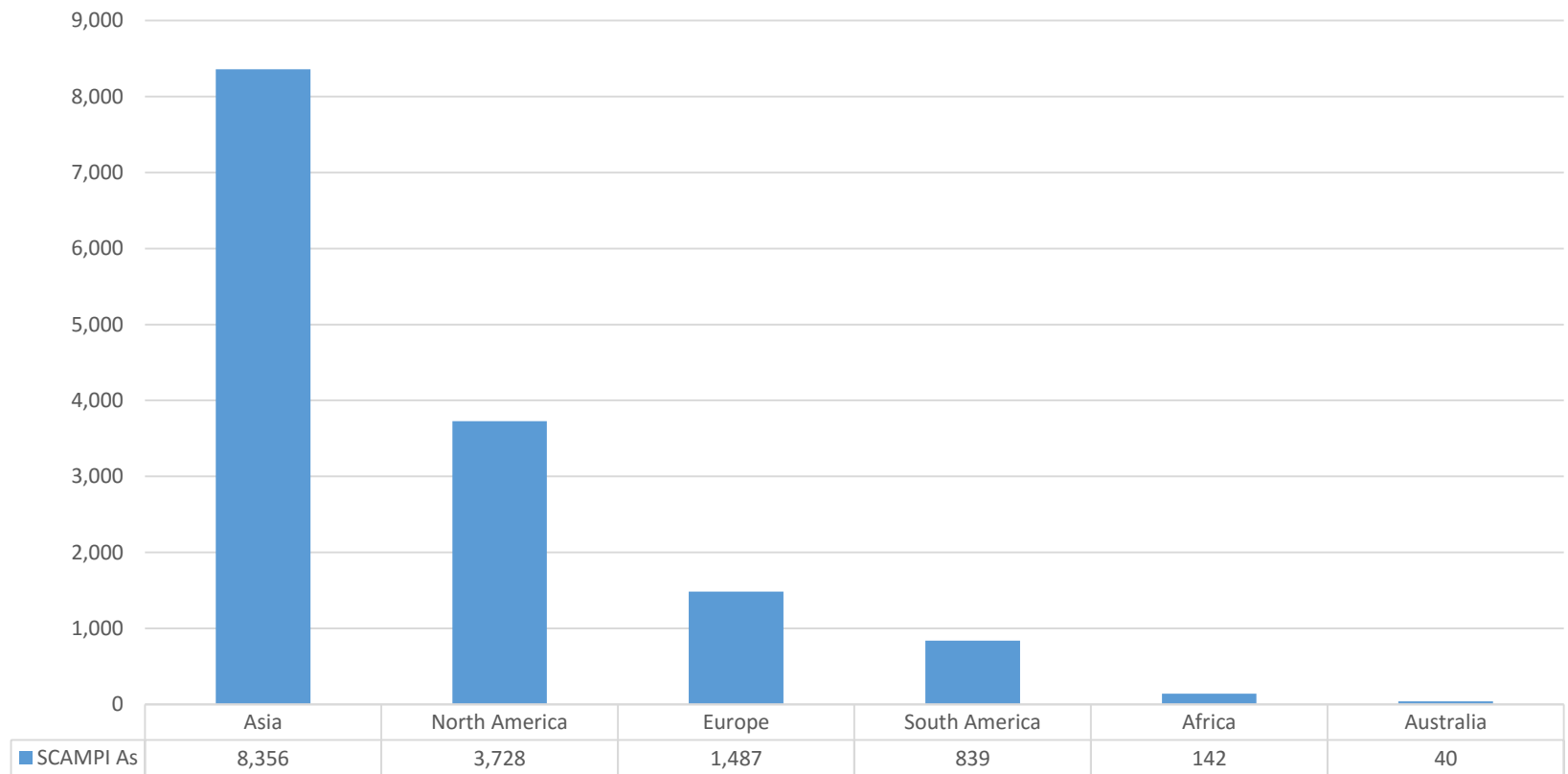
Appraisals by Constellation



Appraisals by Constellation 2007 - 2015



Appraisals by Continent 2007 - 2015

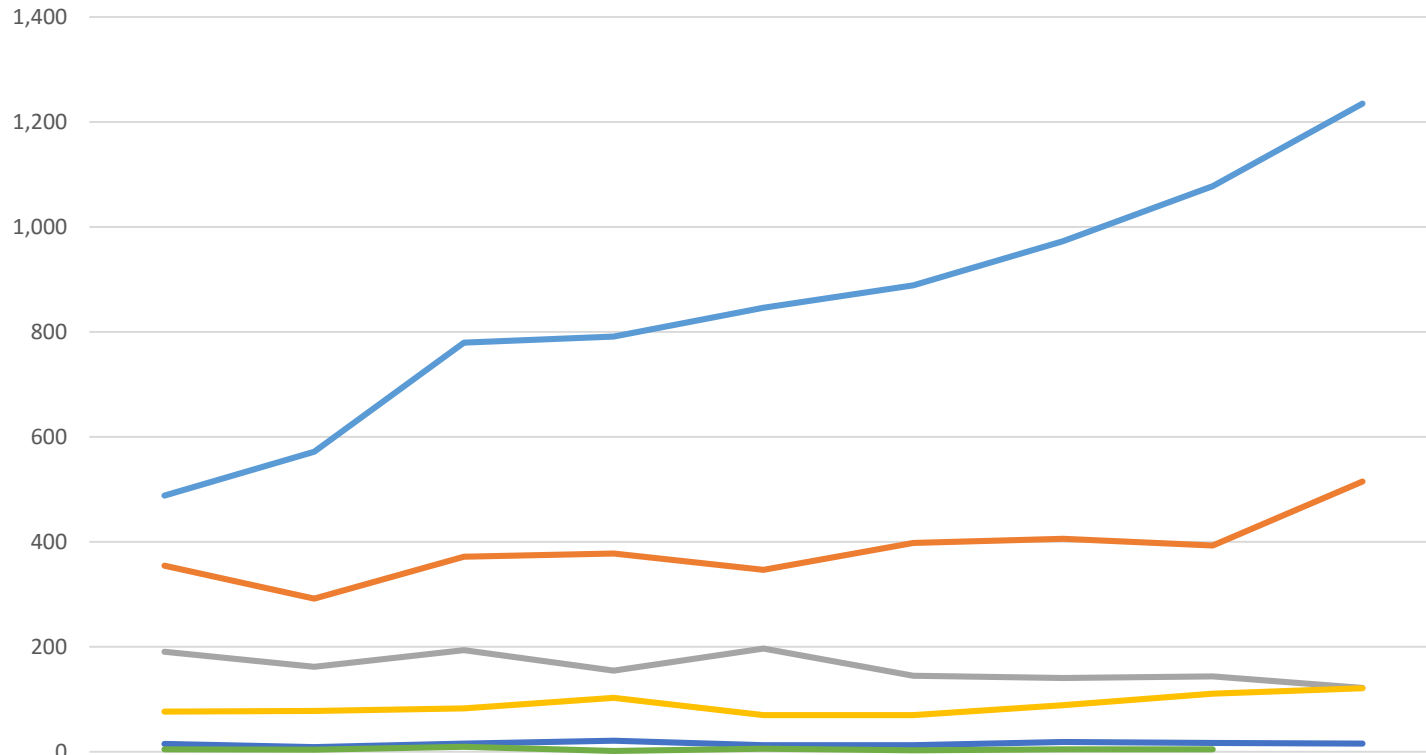


Based on 13,719 CMMI-SCAMPI A Deliveries
1 January 2007 – 30 June 2016
Reflects multi-model and multi-continent appraisals



CMMI[®] Institute

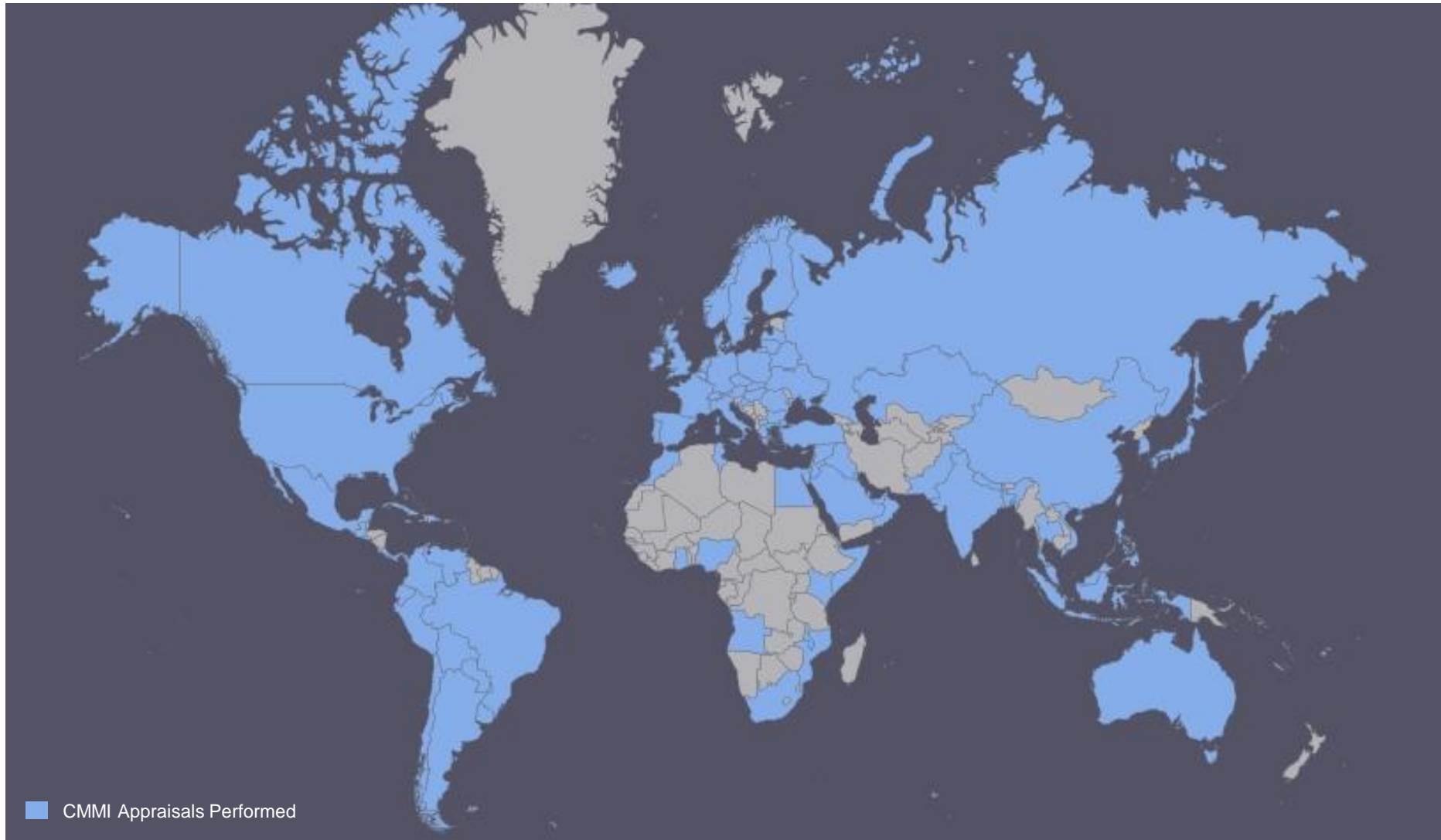
Appraisals by Continent 2007 - 2015



	2007	2008	2009	2010	2011	2012	2013	2014	2015
Asia	488	572	780	791	846	889	973	1,078	1,235
North America	355	292	372	378	347	398	406	393	515
Europe	191	162	194	155	197	145	141	144	122
South America	77	78	83	103	70	70	89	111	121
Africa	15	9	16	21	13	13	19	17	16
Australia	5	4	10	2	6	3	5	5	

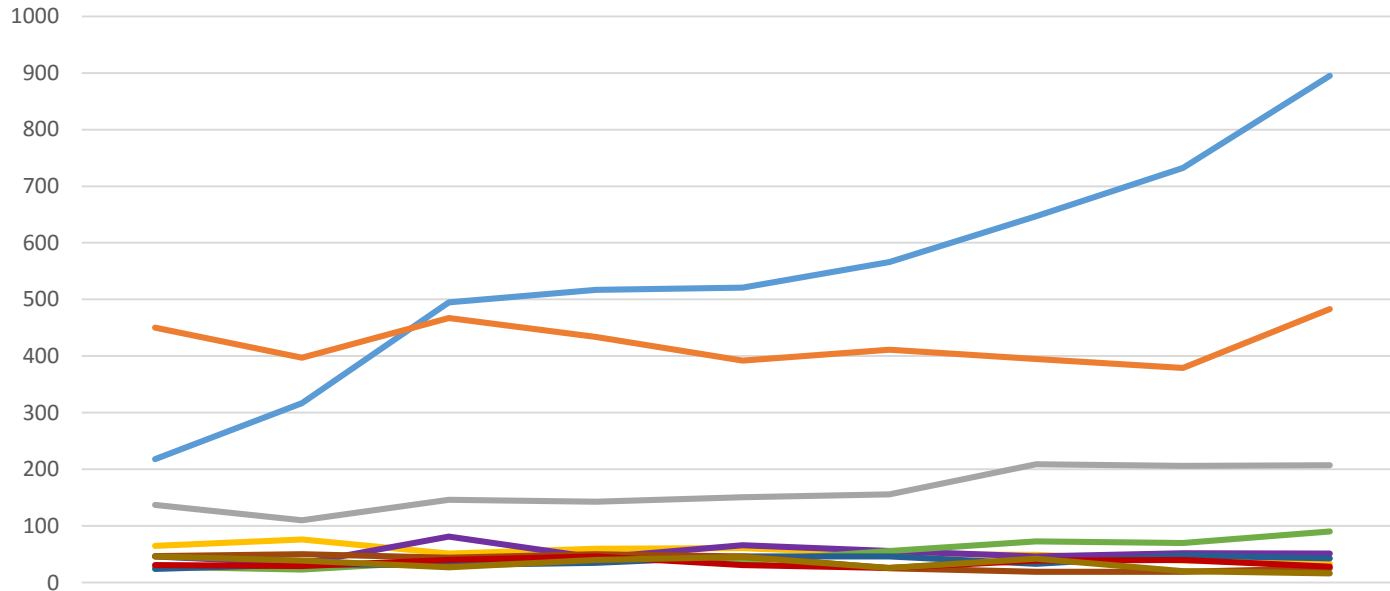


98 Countries Where CMMI Has Performed Appraisals



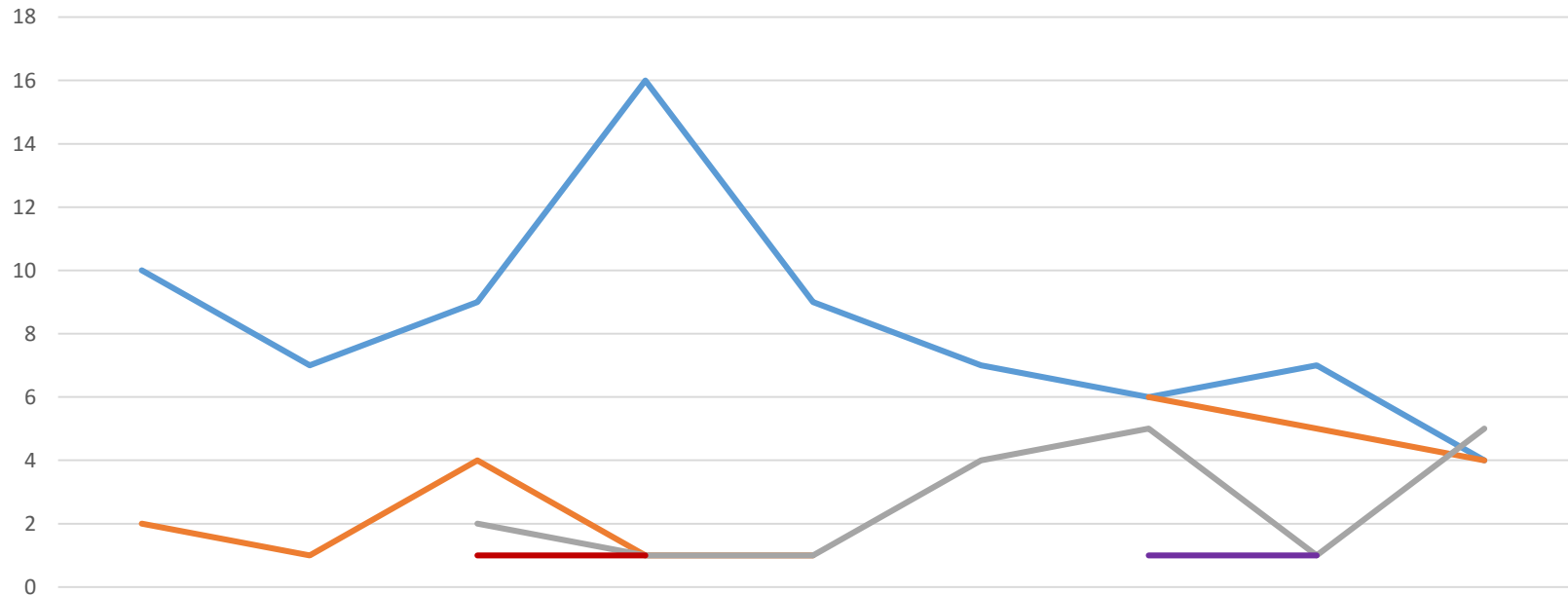
Andorra	Bahrain	Brazil	China	Cyprus	Egypt	Ghana	Iceland	Israel	Kazakhstan	Lebanon	Malaysia	Mozambique	Norway	Peru	Romania	Somalia	Switzerland	Turkey	Uruguay
Angola	Bangladesh	Brunei Darussaleam	Colombia	Czech Republic	El Salvador	Greece	India	Italy	Kenya	Lithuania	Mauritius	Nepal	Oman	Philippines	Russia	South Africa	Syrian Arab Republic	Ukraine	Venezuela
Argentina	Belarus	Bulgaria	Costa Rica	Denmark	Finland	Guatemala	Indonesia	Jamaica	Korea	Luxembourg	Mexico	Netherlands	Pakistan	Poland	Saud Arabia	Spain	Taiwan	UAE	Viet Nam
Australia	Belgium	Canada	Croatia	Dominican Republic	France	Hong Kong	Iraq	Japan	Kuwait	Macedonia	Montserrat	New Zealand	Panama	Portugal	Singapore	Sri Lanka	Thailand	United Kingdom	
Austria	Bolivia	Chile	Cuba	Ecuador	Germany	Hungary	Ireland	Jordan	Latvia	Malawi	Morocco	Nigeria	Paraguay	Quatar	Slovakia	Sweden	Tunisia	United States	

Highest Number of Appraisals by Country 2007 - 2015



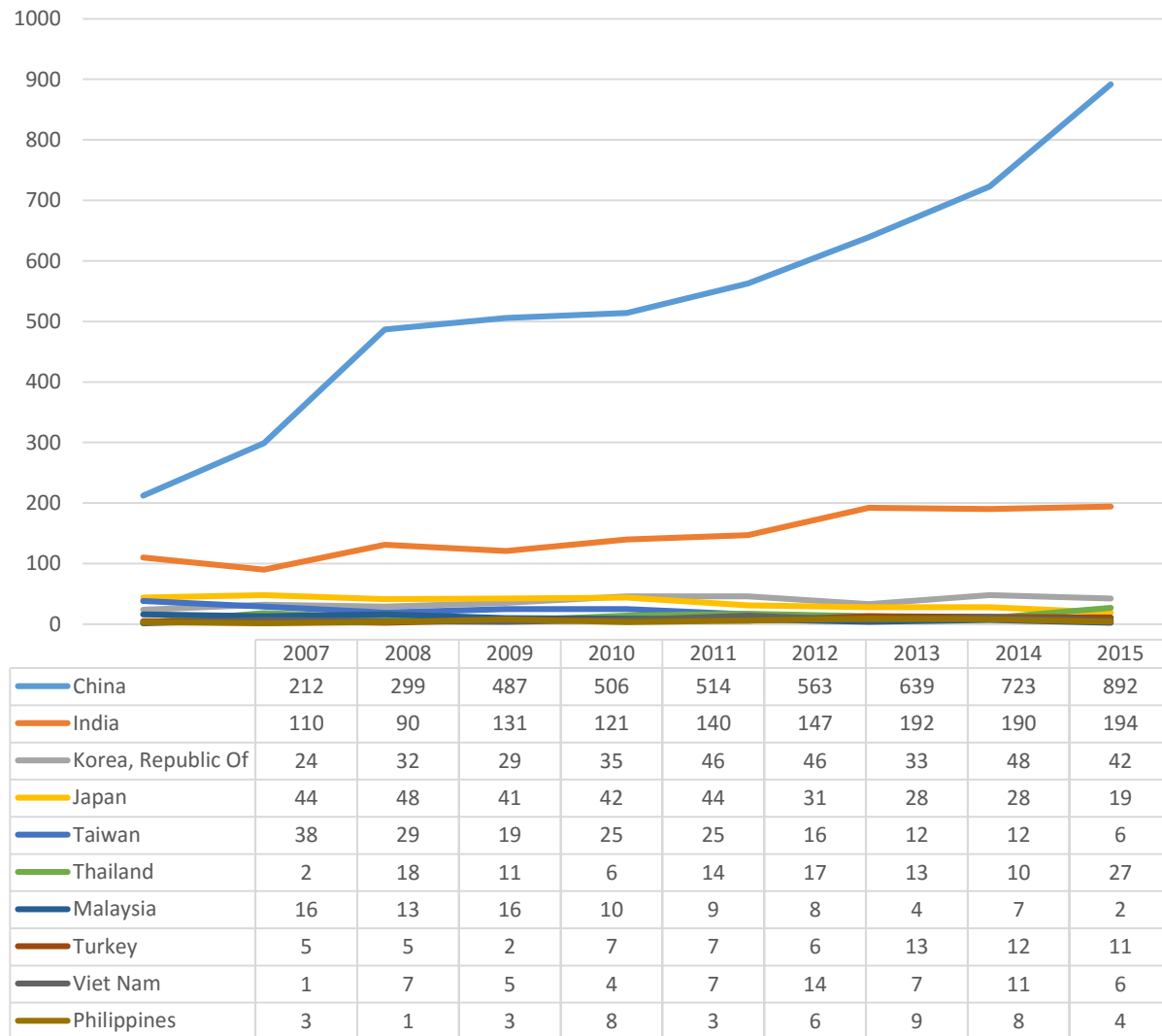
	2007	2008	2009	2010	2011	2012	2013	2014	2015
China	218	317	495	517	521	566	647	732	895
United States	450	397	467	434	392	411	395	379	483
India	137	110	146	143	151	156	209	206	207
Japan	65	76	51	60	61	50	49	39	33
Spain	46	34	81	44	66	56	46	52	51
Mexico	28	23	38	43	37	56	73	70	90
Korea, Republic Of	24	32	31	35	46	46	33	48	43
United Kingdom	47	50	44	50	46	25	19	19	25
Brazil	31	29	40	46	31	26	39	40	28
Germany	46	39	27	40	45	26	42	20	16

Highest Number of Appraisals in Africa 2007 - 2015



	2007	2008	2009	2010	2011	2012	2013	2014	2015
Egypt	10	7	9	16	9	7	6	7	4
Morocco	2	1	4	1	1		6	5	4
South Africa	3		2	1	1	4	5	1	5
Angola					1			2	
Kenya					1		1	1	
Mauritius		1				1			1
Tunisia			1	1		1			
Nigeria									2
Ghana				1					
Malawi				1					

Highest Number of Appraisals in Asia 2007 - 2015

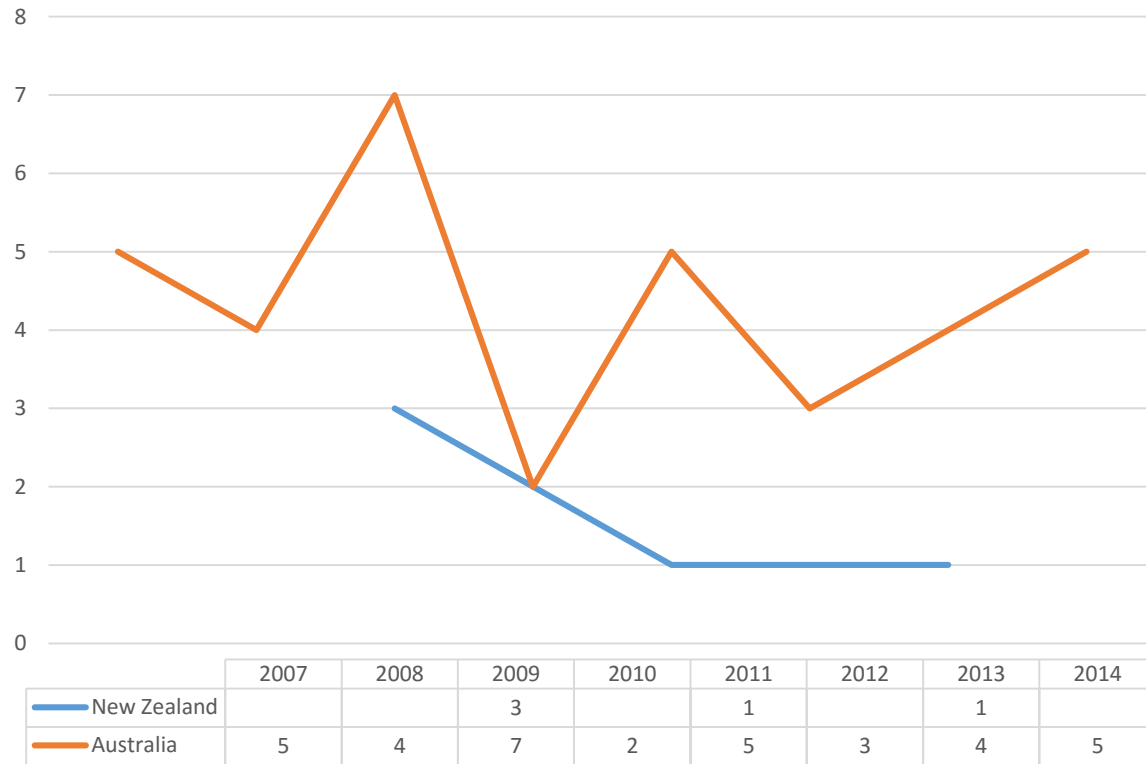


Based on 7,652 CMMI-SCAMPI A Deliveries
 1 January 2007 – 31 December 2015
 Reflects multi-model and multi-continent appraisals

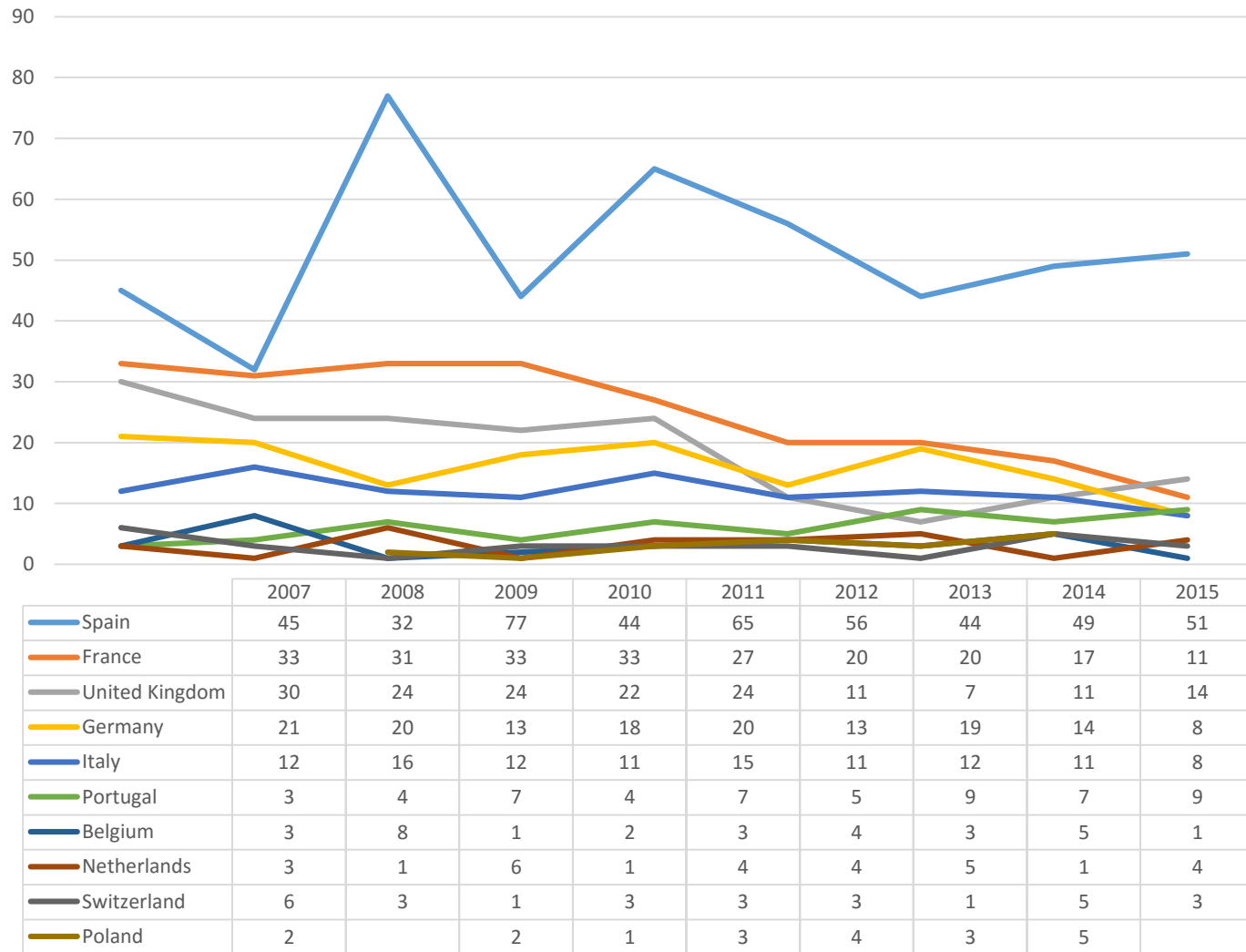


CMMI Institute

Appraisals in Australia 2007 - 2015



Highest Number of Appraisals in Europe 2007 - 2015

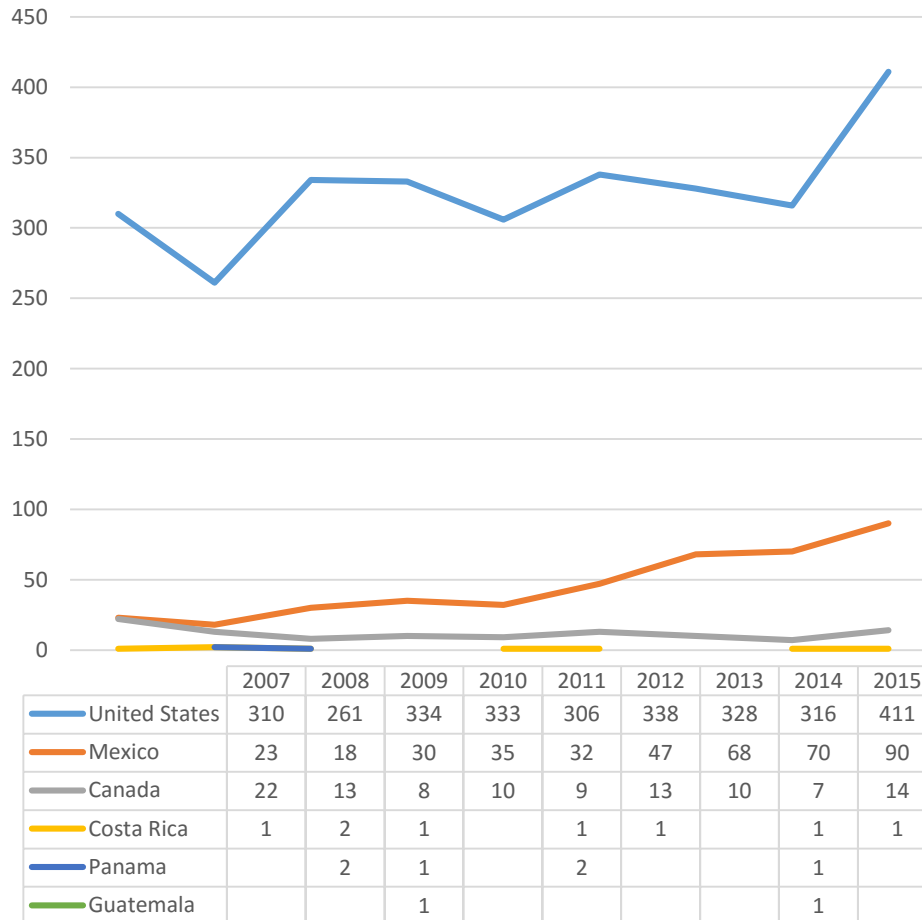


Based on 1,451 CMMI-SCAMPI A Deliveries
 1 January 2007 – 31 December 2015
 Reflects multi-model and multi-continent appraisals

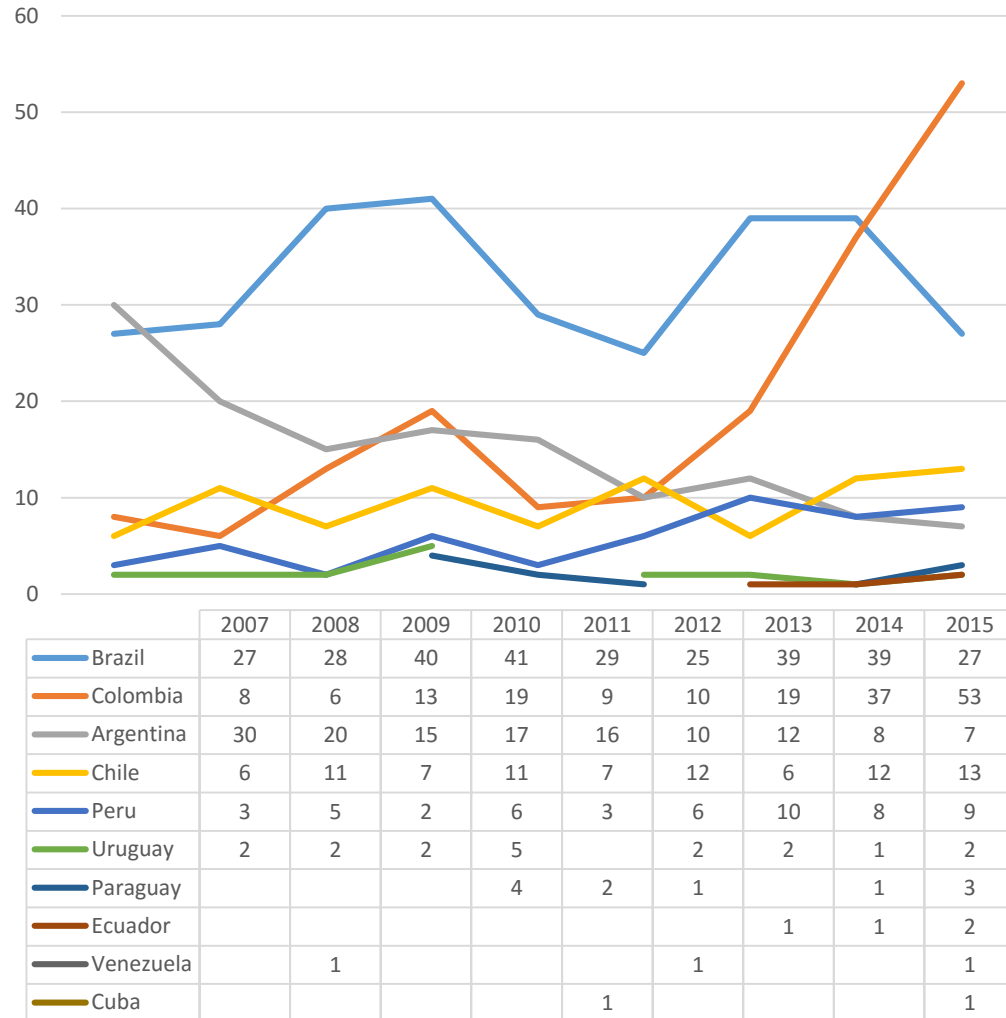


CMMI Institute

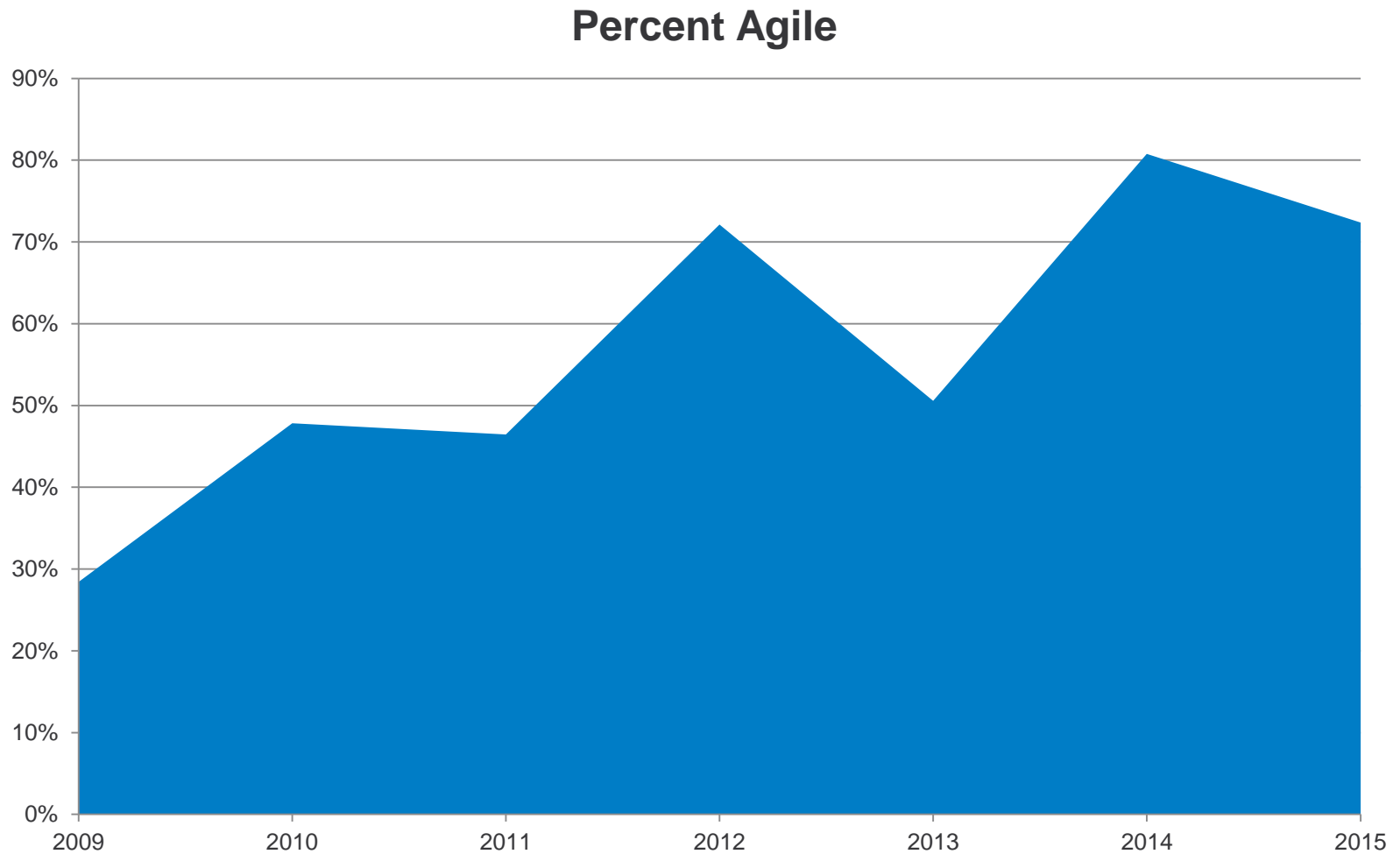
Appraisals in North America 2007 - 2015



Highest Number of Appraisals in South America 2007 - 2015



Appraisals by Agile Organizations*



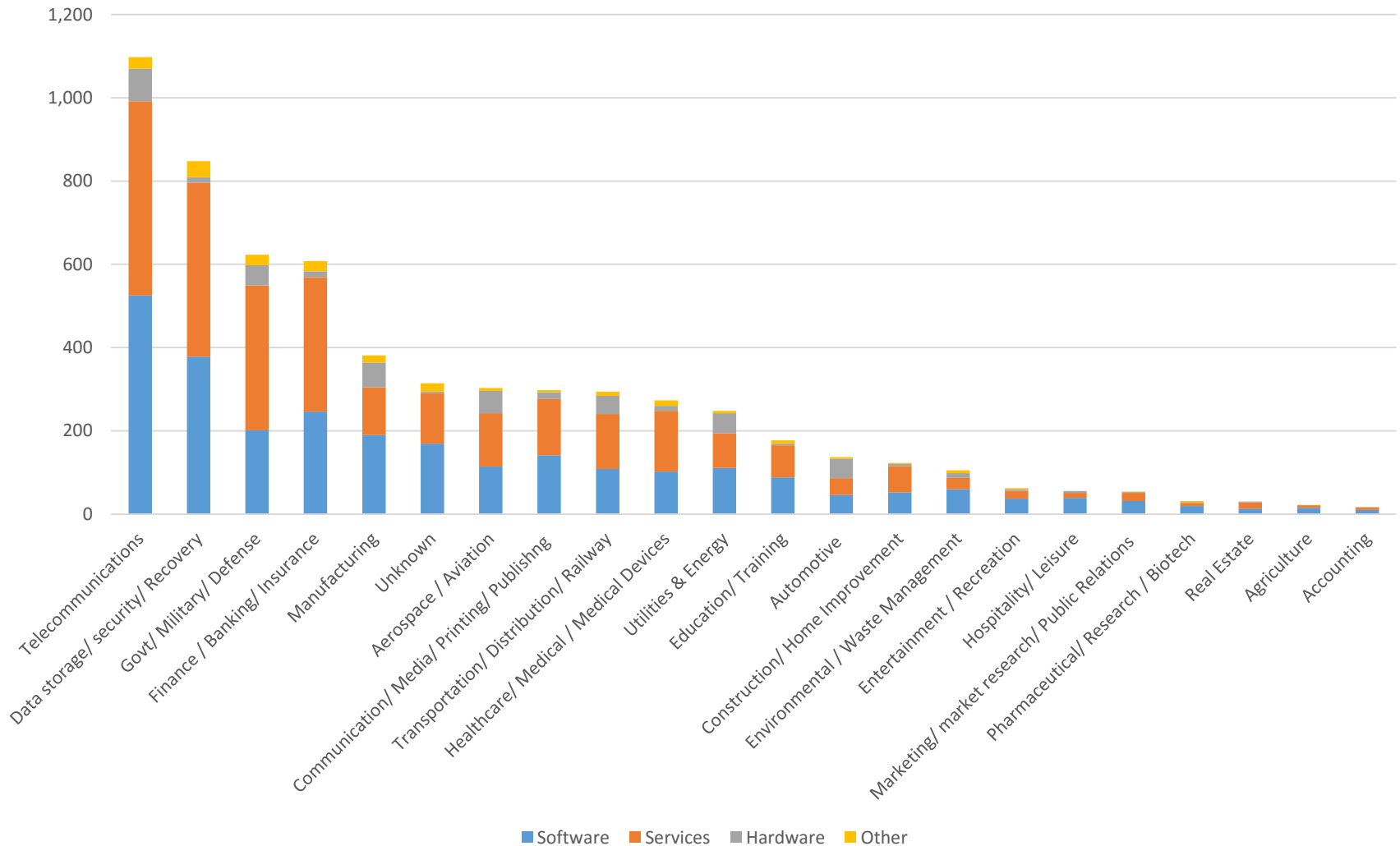
*Percent of appraisals where organizations leverage Agile methods



CMMI Institute

Appraisals by Industry

Main Vertical Industries July2013-June2016



Contact Information

Email info@cmmiinstitute.com

Customer Relations (412) 282-4020

Website www.CMMIInstitute.com

Mailing Address
Customer Relations
CMMI Institute
11 Stanwix Street
Pittsburgh, PA 15222



NO WARRANTY

THIS MATERIAL IS FURNISHED ON AN “AS-IS” BASIS. CMMI INSTITUTE MAKES NO WARRANTIES OF ANY KIND, EITHER EXPRESSED OR IMPLIED, AS TO ANY MATTER INCLUDING, BUT NOT LIMITED TO, WARRANTY OF FITNESS FOR PURPOSE OR MERCHANTABILITY, EXCLUSIVITY, OR RESULTS OBTAINED FROM USE OF THE MATERIAL. CMMI INSTITUTE DOES NOT MAKE ANY WARRANTY OF ANY KIND WITH RESPECT TO FREEDOM FROM PATENT, TRADEMARK, OR COPYRIGHT INFRINGEMENT.

